

ADRESSE DE LA CONSTRUCTION / PLACE DES ANCIENS COMBATTANTS / RUE HENRI BARBUSSE 92121 ANTONY

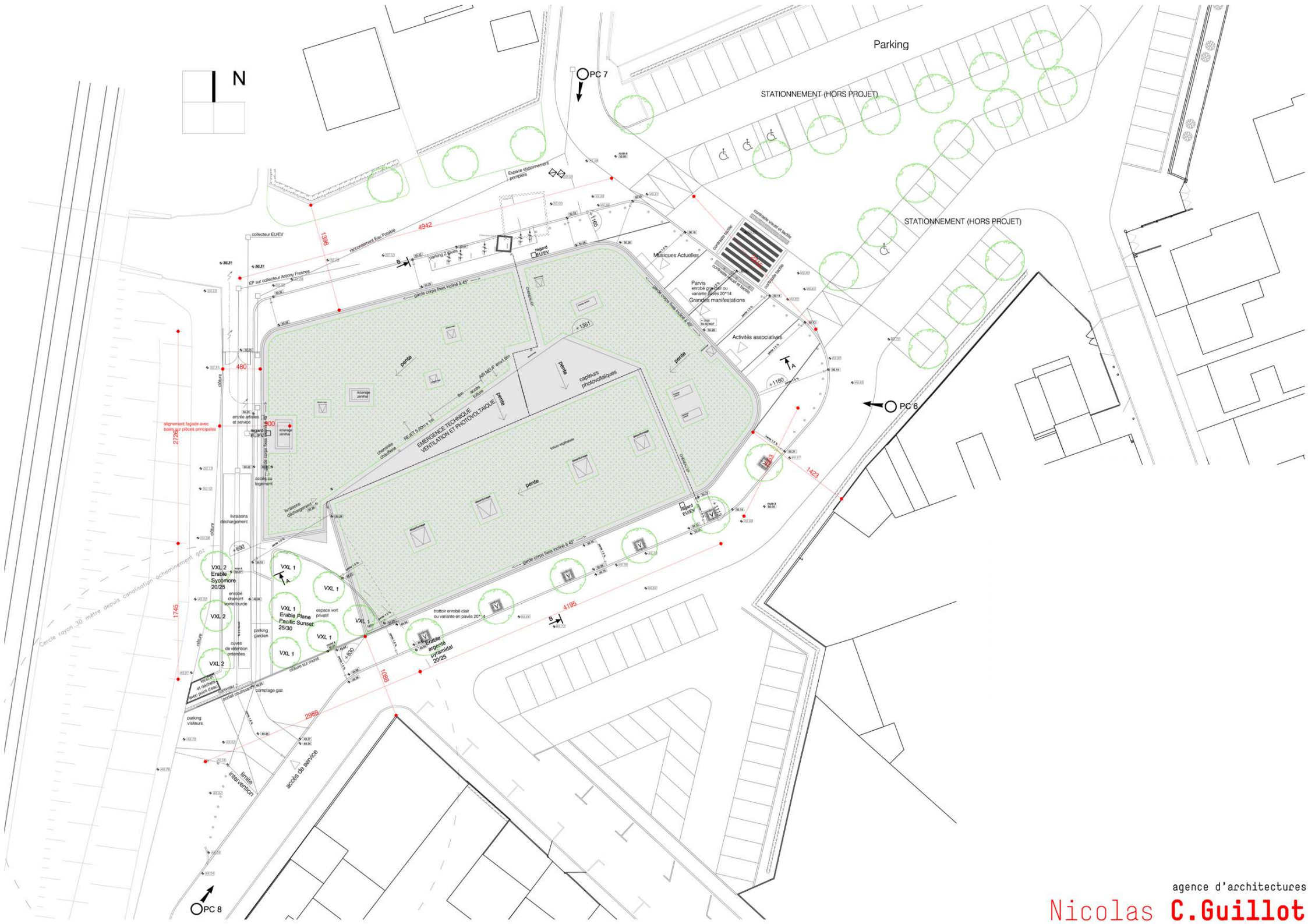


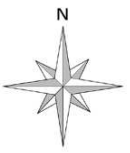


PC 7 photographie permettant de situer le terrain dans un environnement proche



PC 8 photographie permettant de situer le terrain dans le paysage lointain

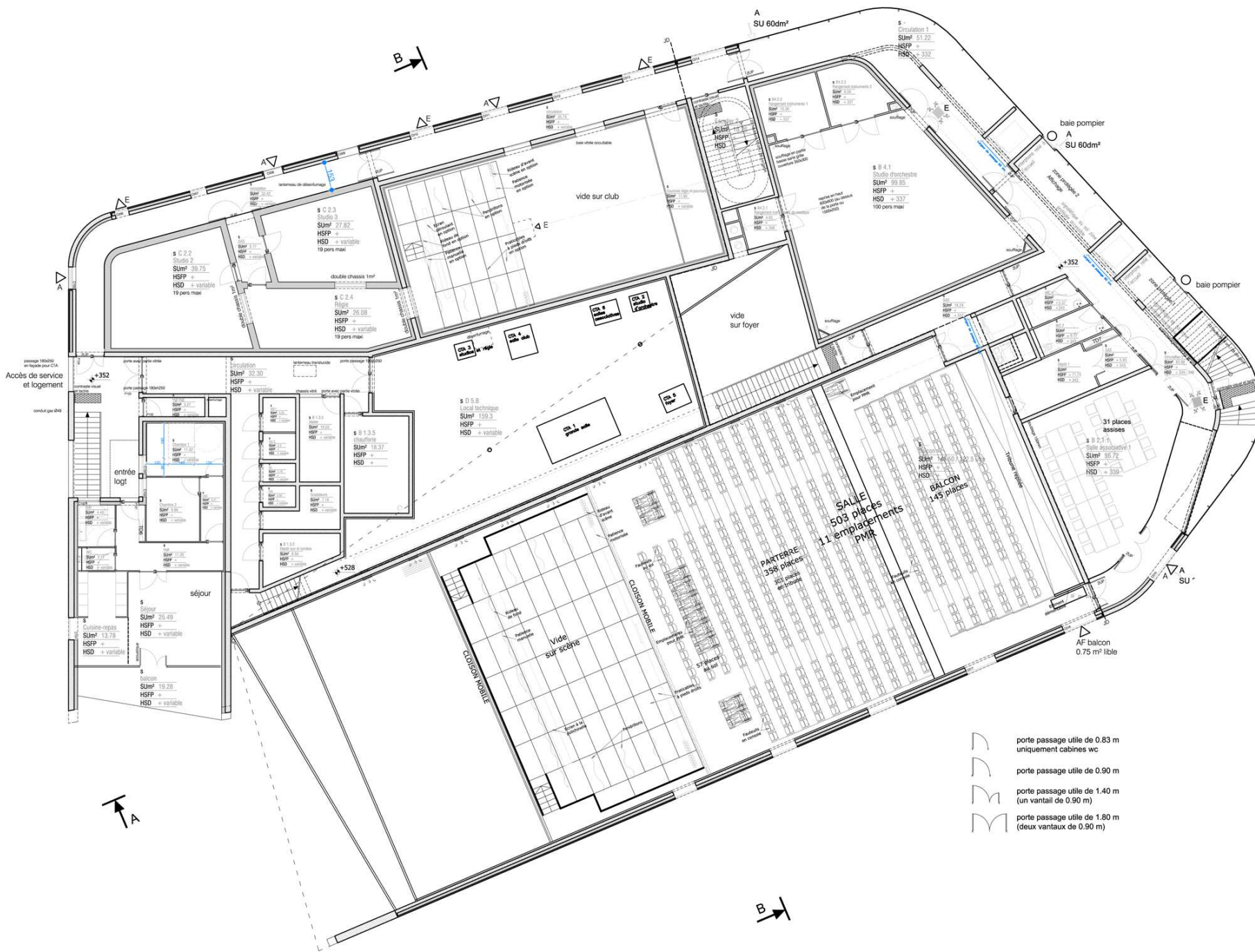




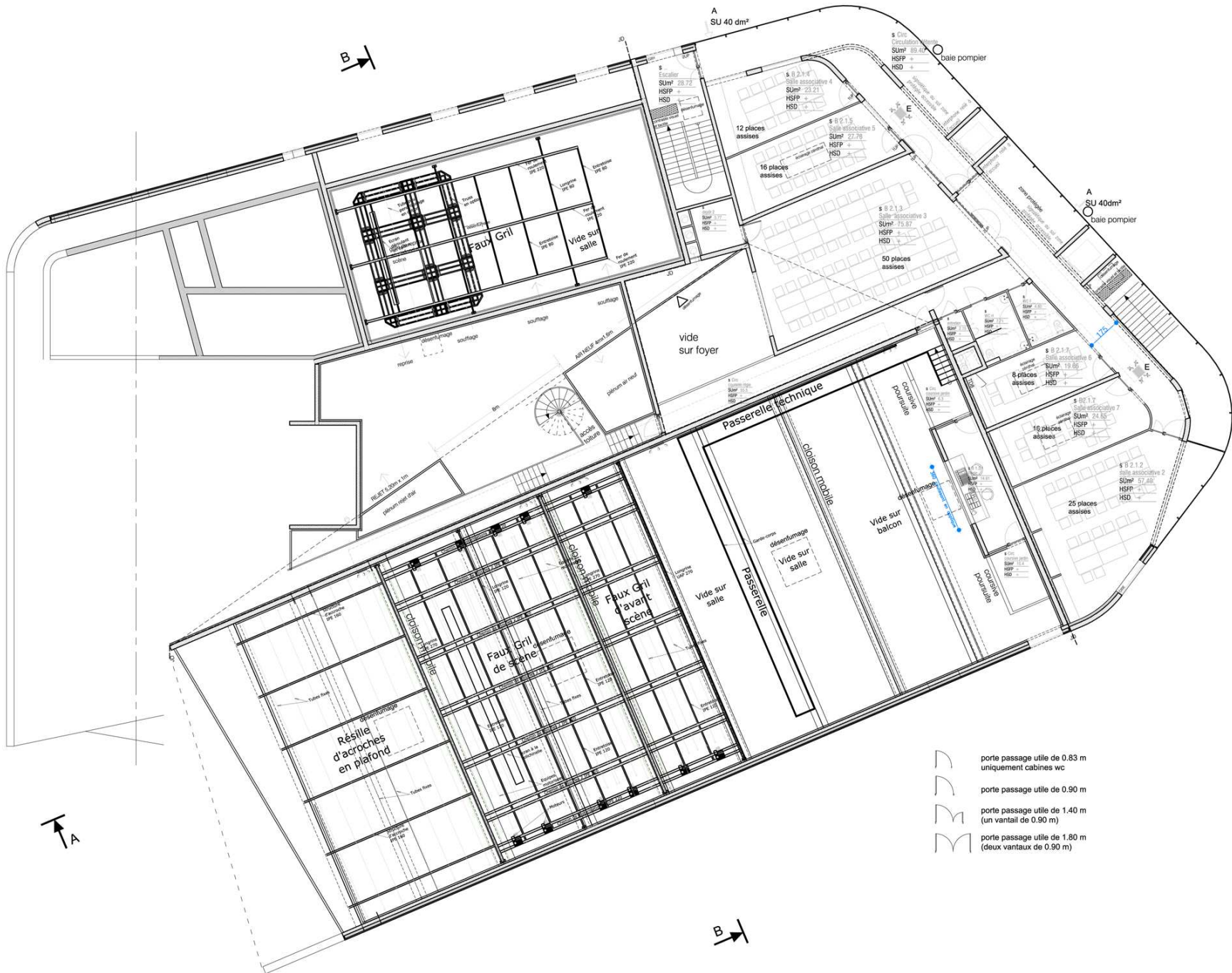
**LEGENDE**





- Espaces verts
- Pavés
- Béton bitumineux noir et rouge
- Candélabre projet
- Candélabre existant
- Potelet

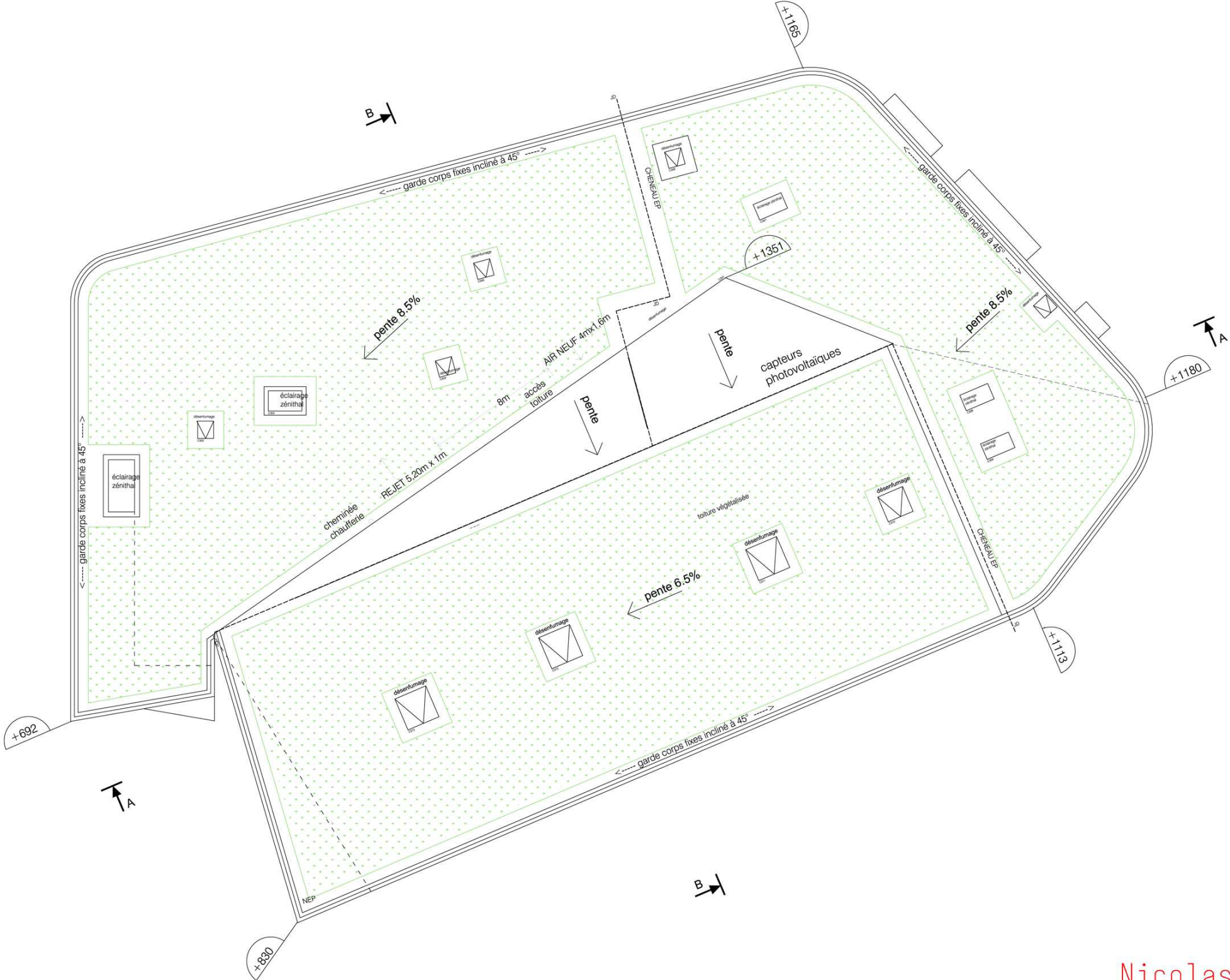


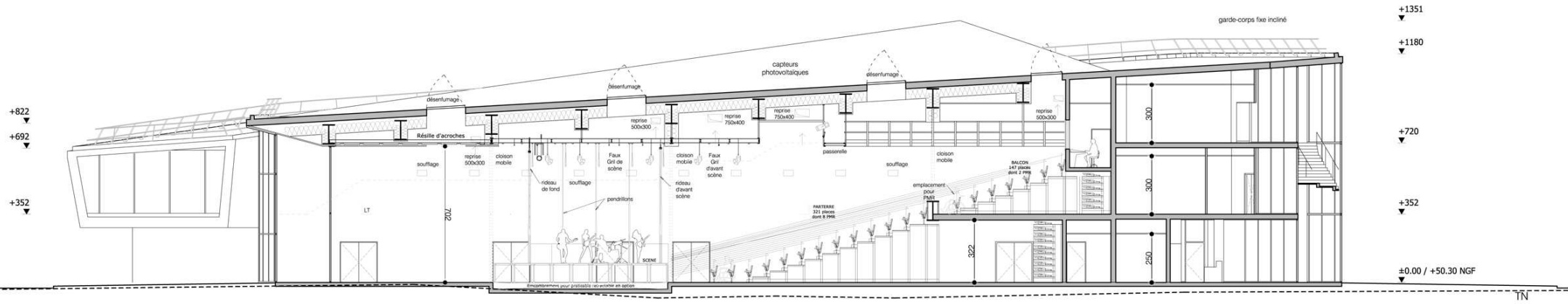


- porte passage utile de 0.83 m  
uniquement cabines wc
- porte passage utile de 0.90 m
- porte passage utile de 1.40 m  
(un vantail de 0.90 m)
- porte passage utile de 1.80 m  
(deux vantaux de 0.90 m)

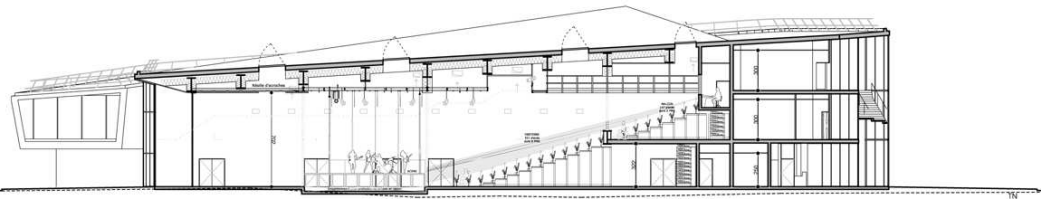


-  porte passage utile de 0.83 m  
uniquement cabines wc
-  porte passage utile de 0.90 m
-  porte passage utile de 1.40 m  
(un vantail de 0.90 m)
-  porte passage utile de 1.80 m  
(deux vantaux de 0.90 m)

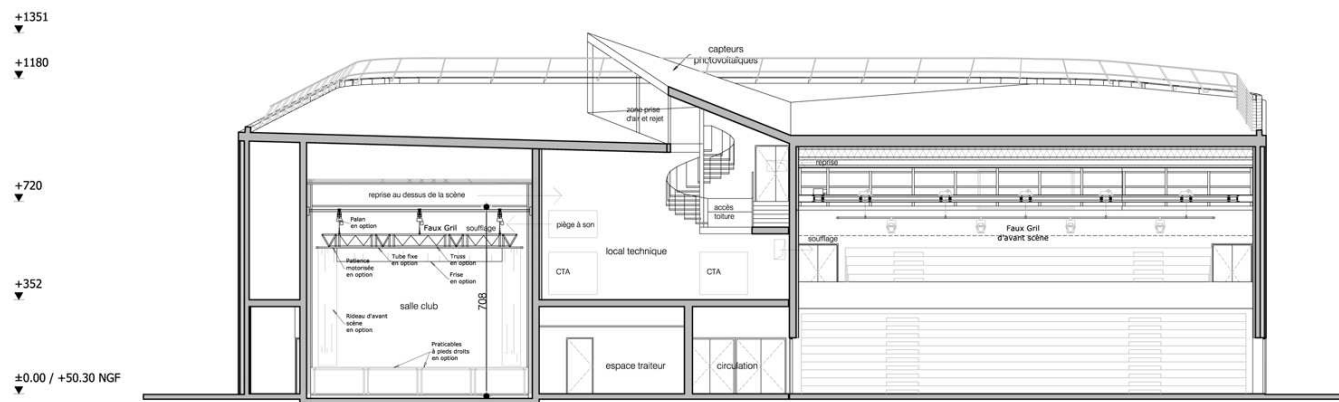




coupe AA



coupe AA coupe sur terrain



coupe BB

D : Double châssis  
R : Occultation solaire par store  
FS : Facteur Solaire

+692

+352

+000 / +50.30 NGF

+1180

+720

+352

+000 / +50.30 NGF

capteurs photovoltaïques

bardage métallique gris clair

béton lasuré gris vert

menuiseries aluminium gris clair

FACADE SUD

+720

+352

+000 / +50.30 NGF

béton lasuré gris vert

menuiseries aluminium gris clair

+1351

+1180

+720

+352

+000 / +50.30 NGF

menuiseries aluminium gris clair

béton lasuré gris vert

toiture végétalisée

FACADE EST

FACADE OUEST

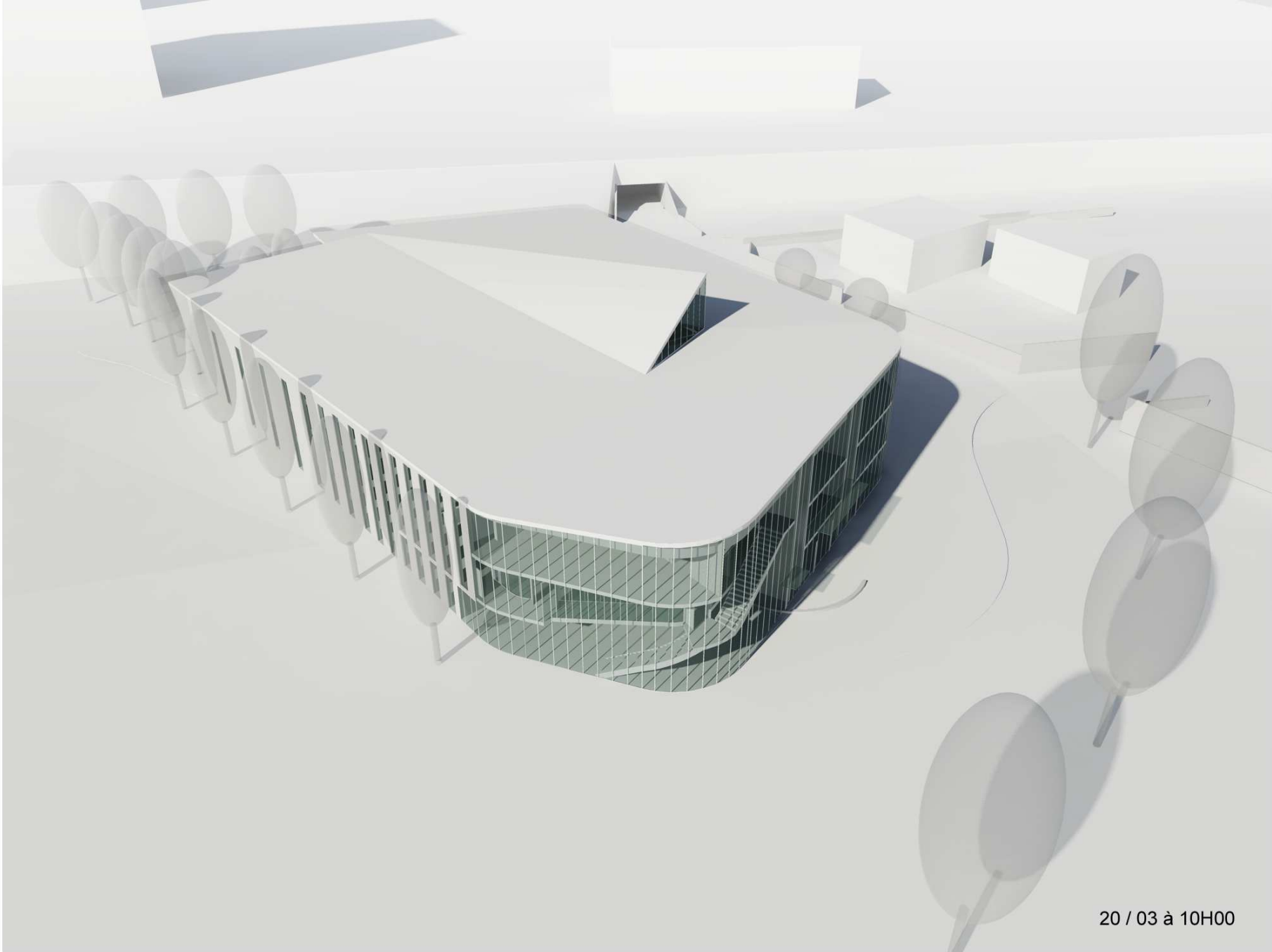
agence d'architectures

Nicolas C. Guillot

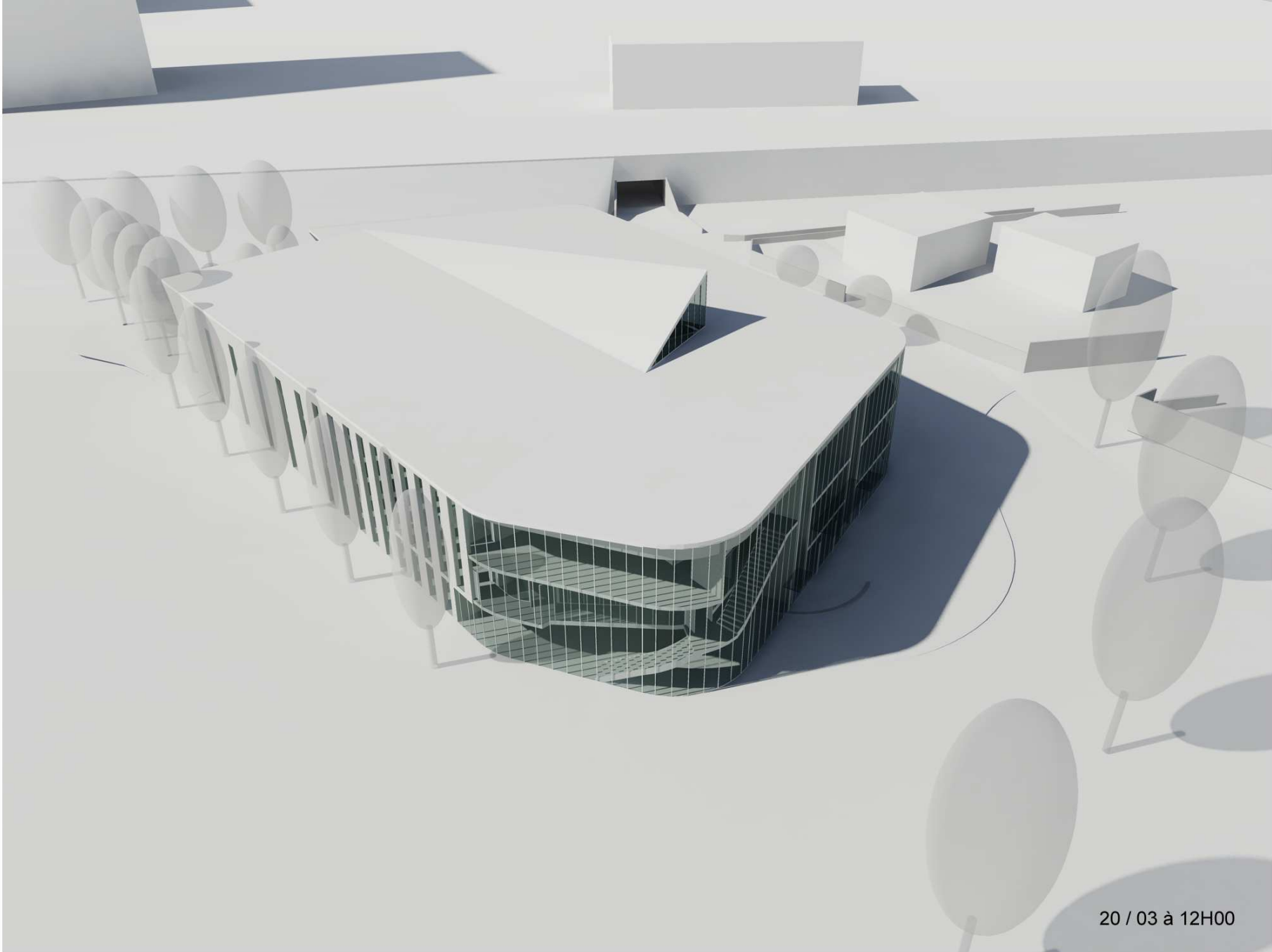


agence d'architectures

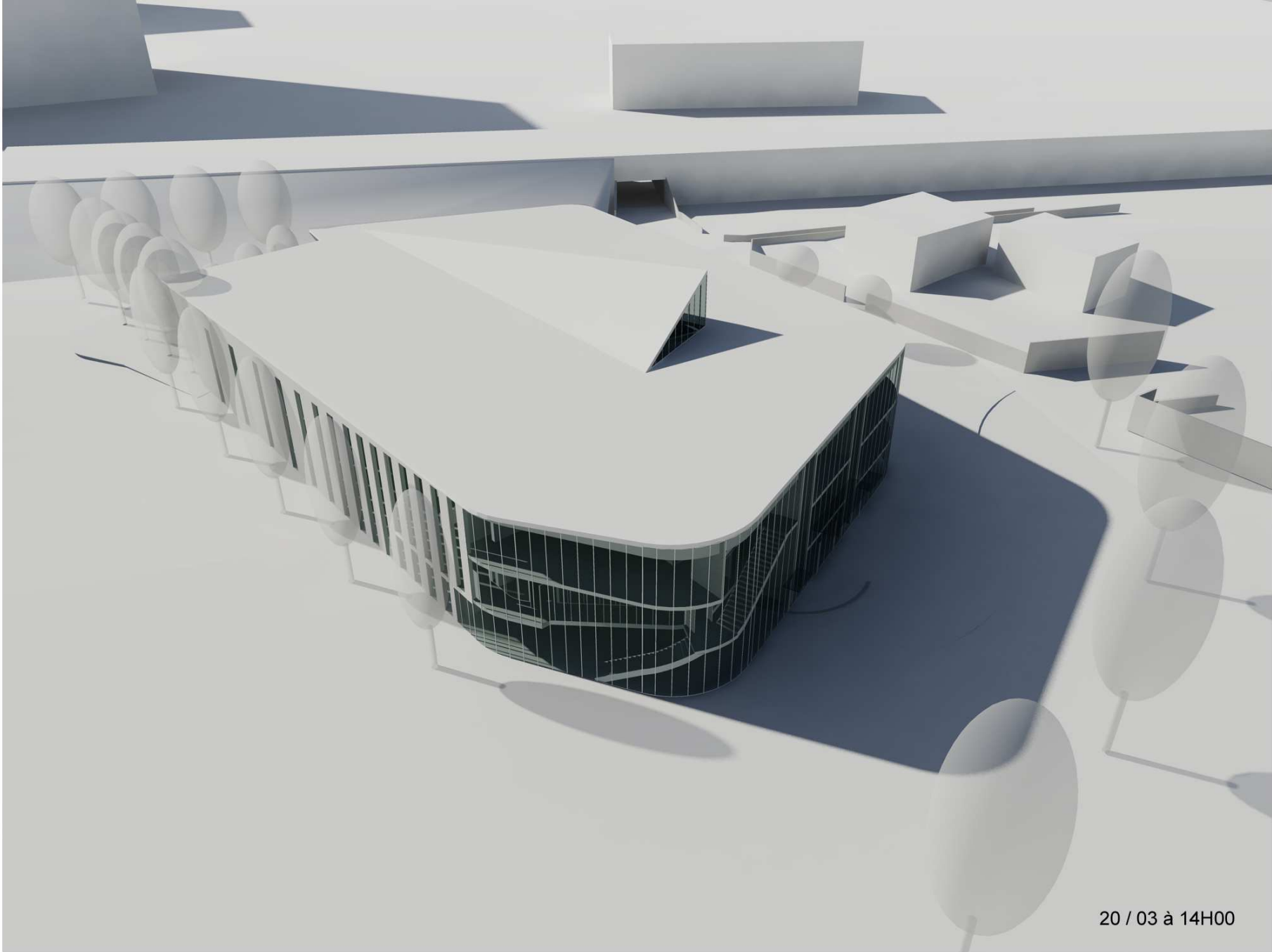
Nicolas **C. Guillot**



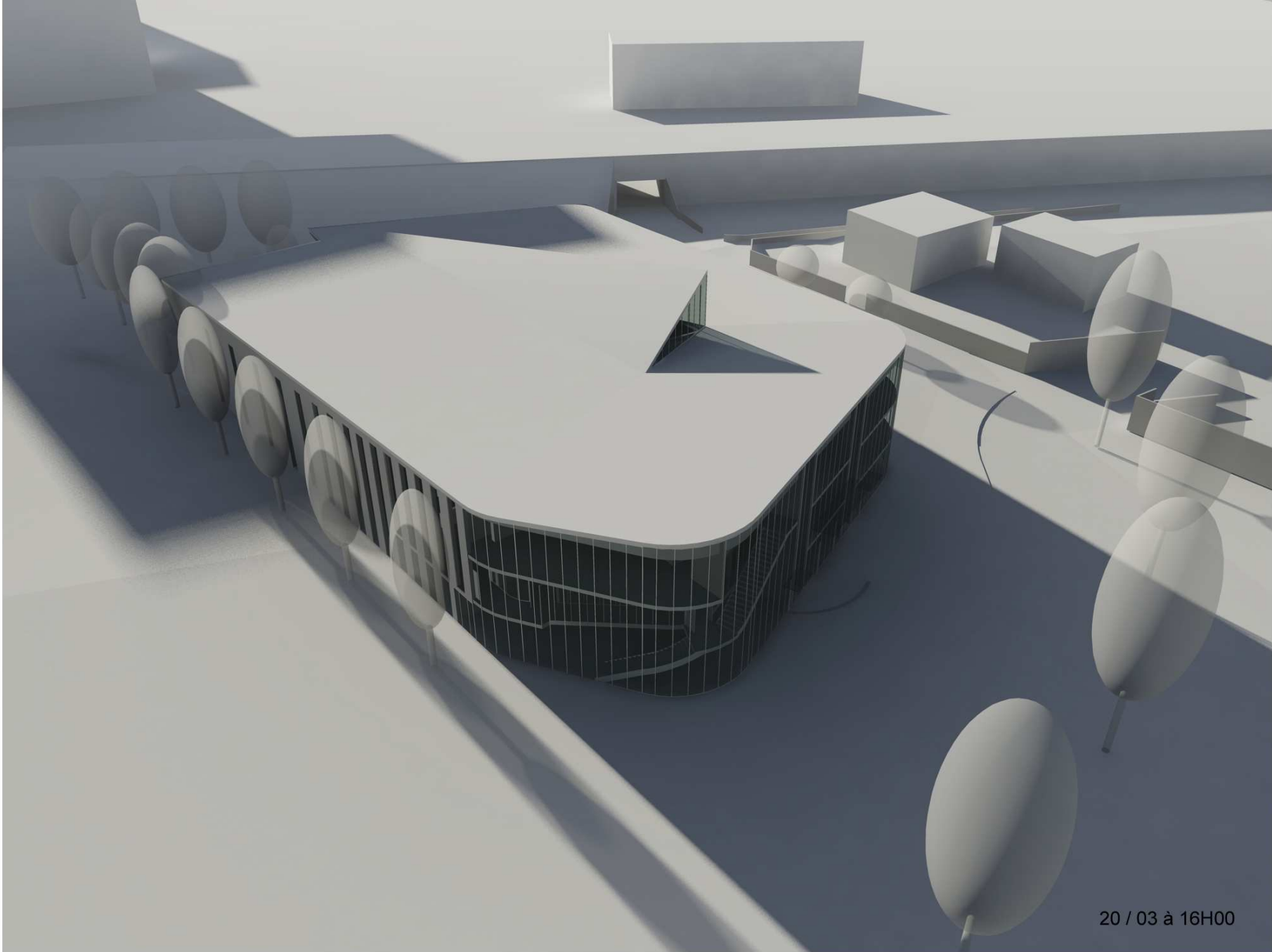
20 / 03 à 10H00



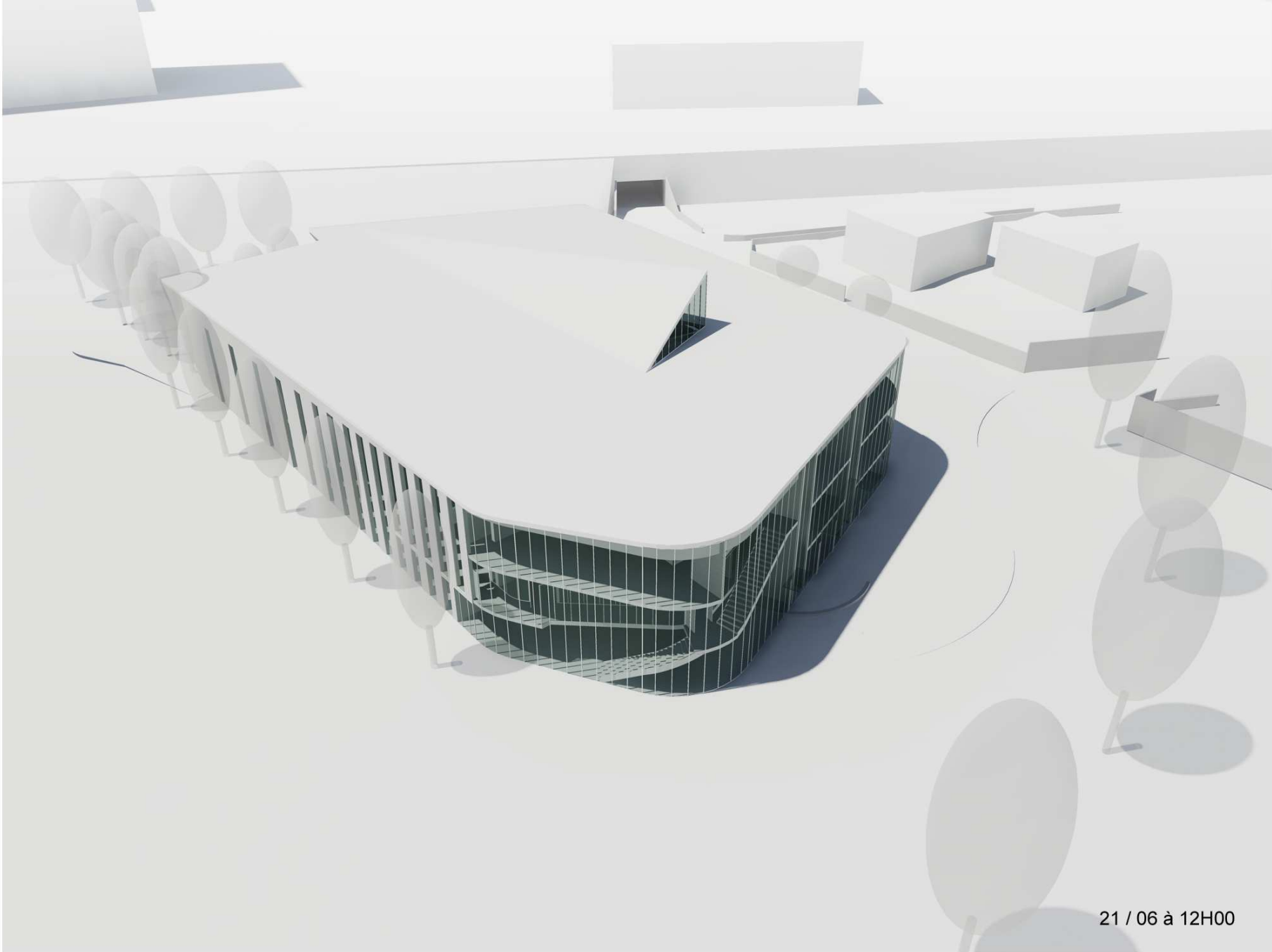
20 / 03 à 12H00



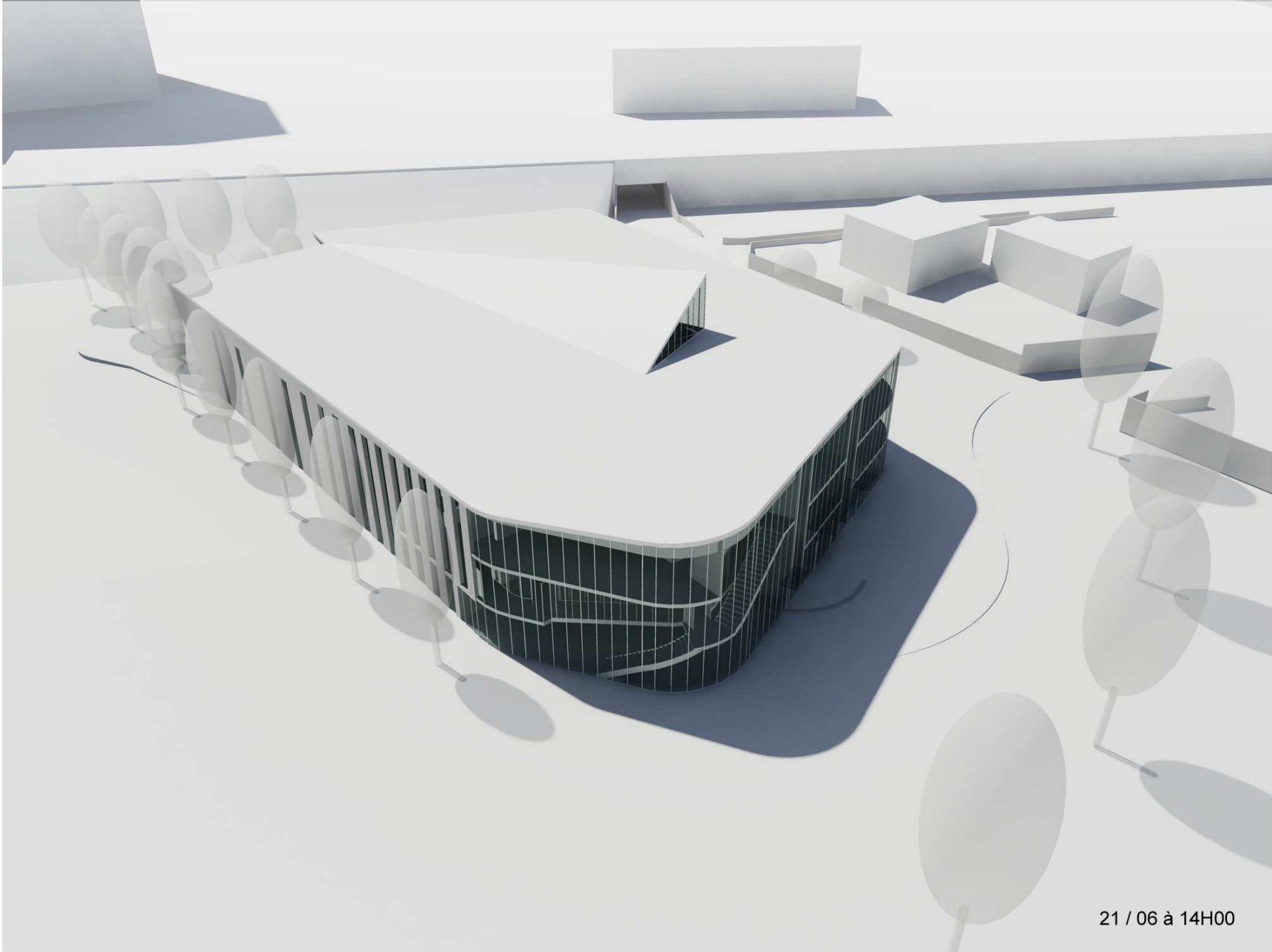
20 / 03 à 14H00



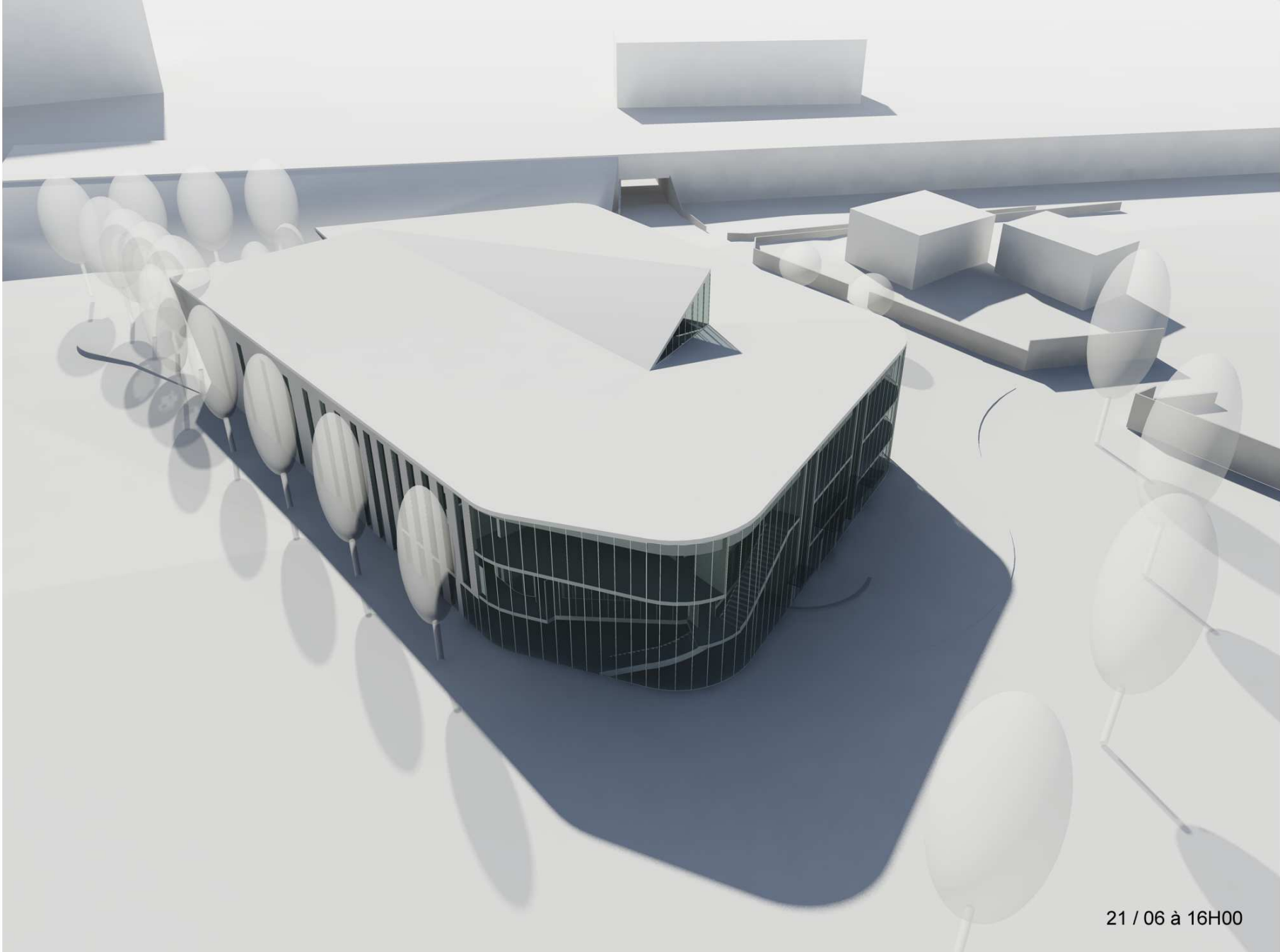
20 / 03 à 16H00



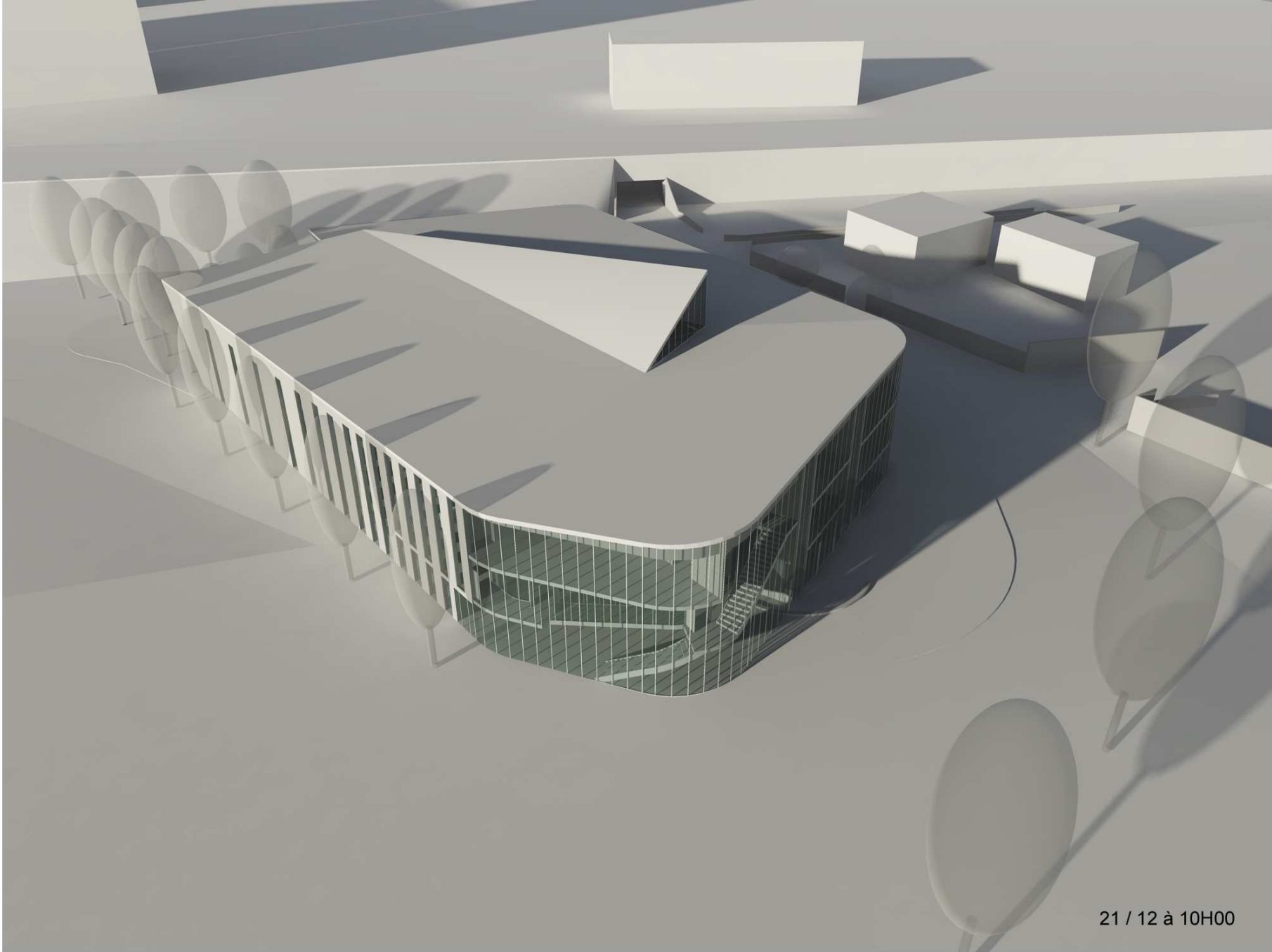
21 / 06 à 12H00



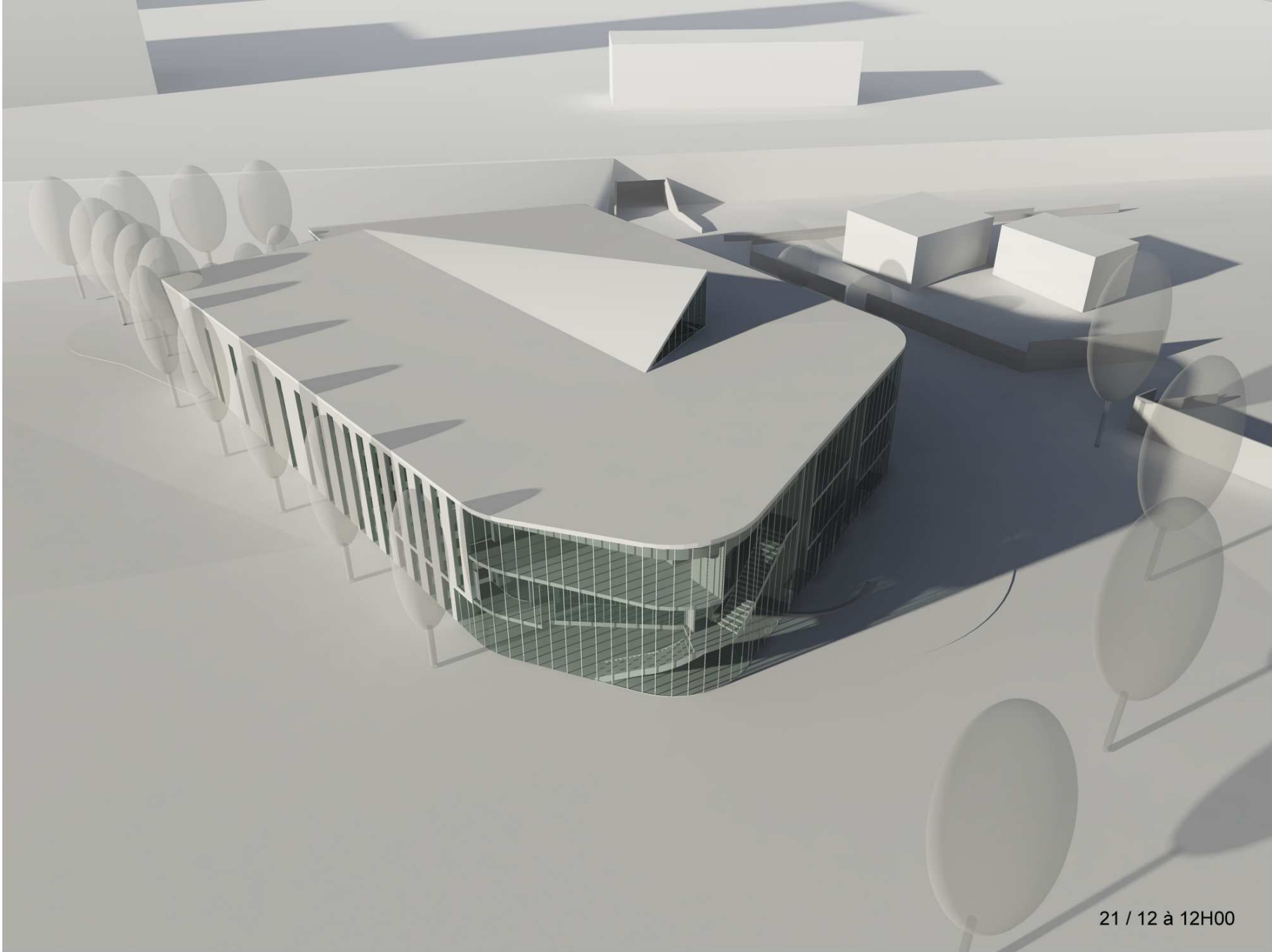
21 / 06 à 14H00



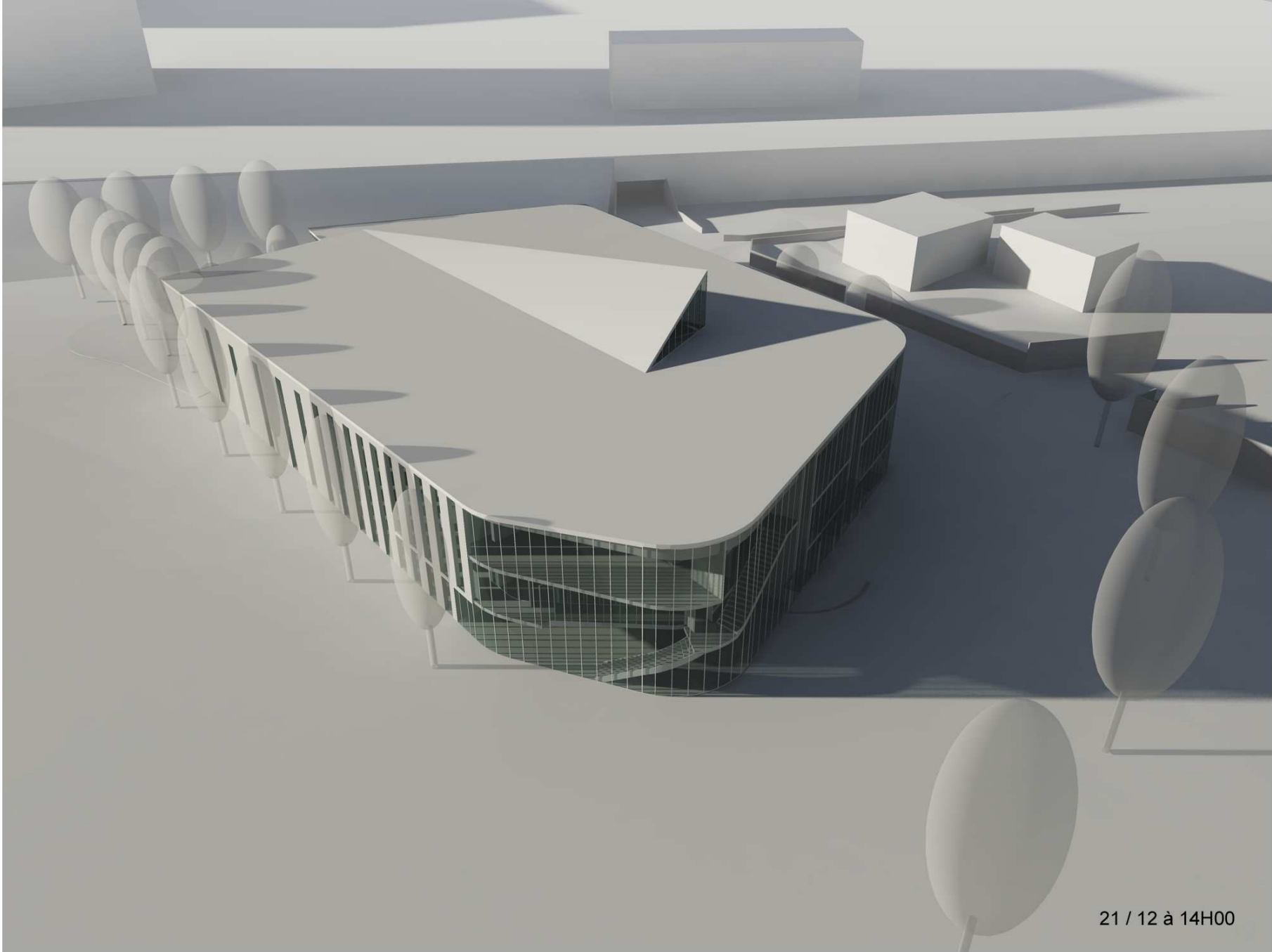
21 / 06 à 16H00



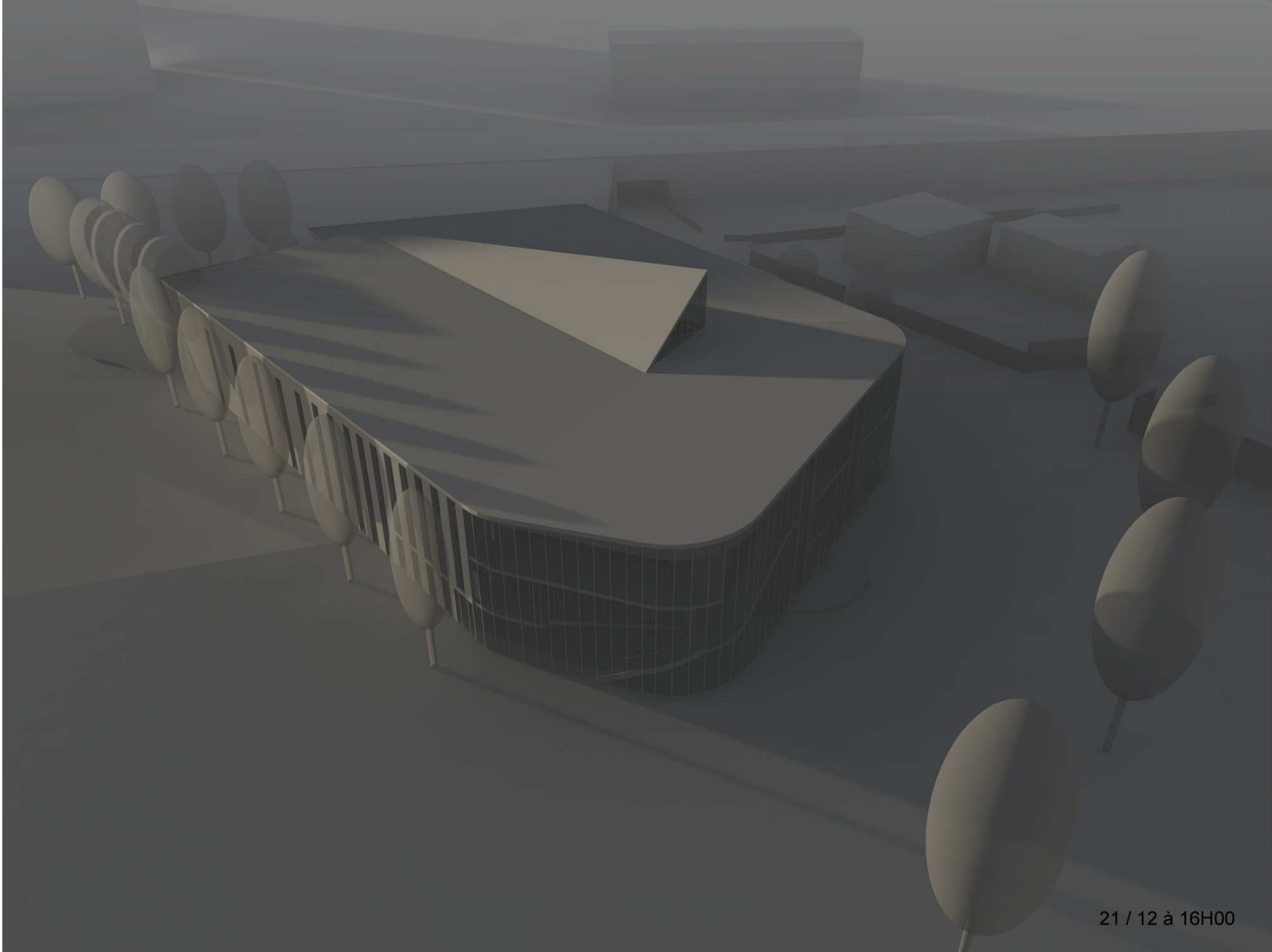
21 / 12 à 10H00



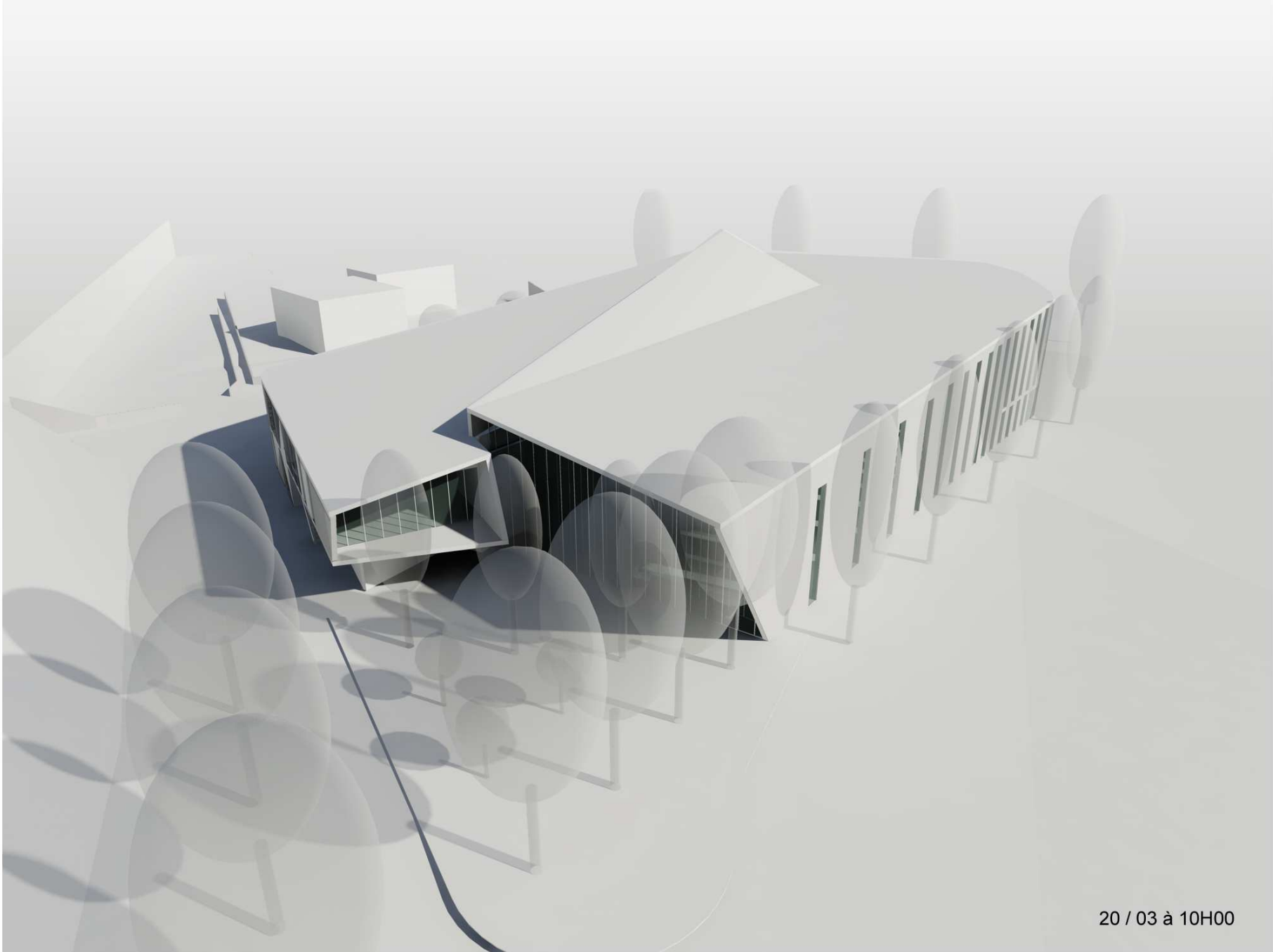
21 / 12 à 12H00



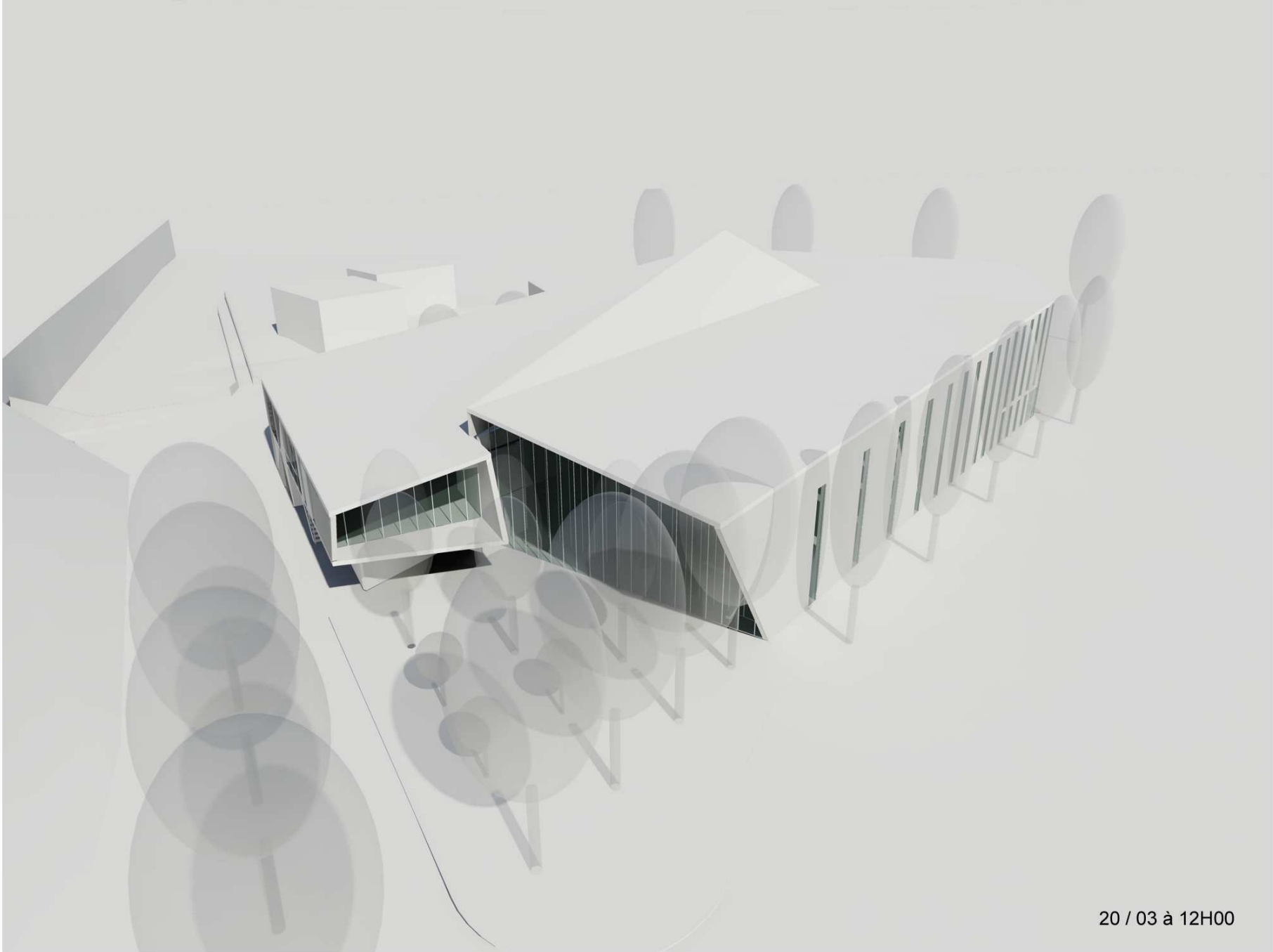
21 / 12 à 14H00



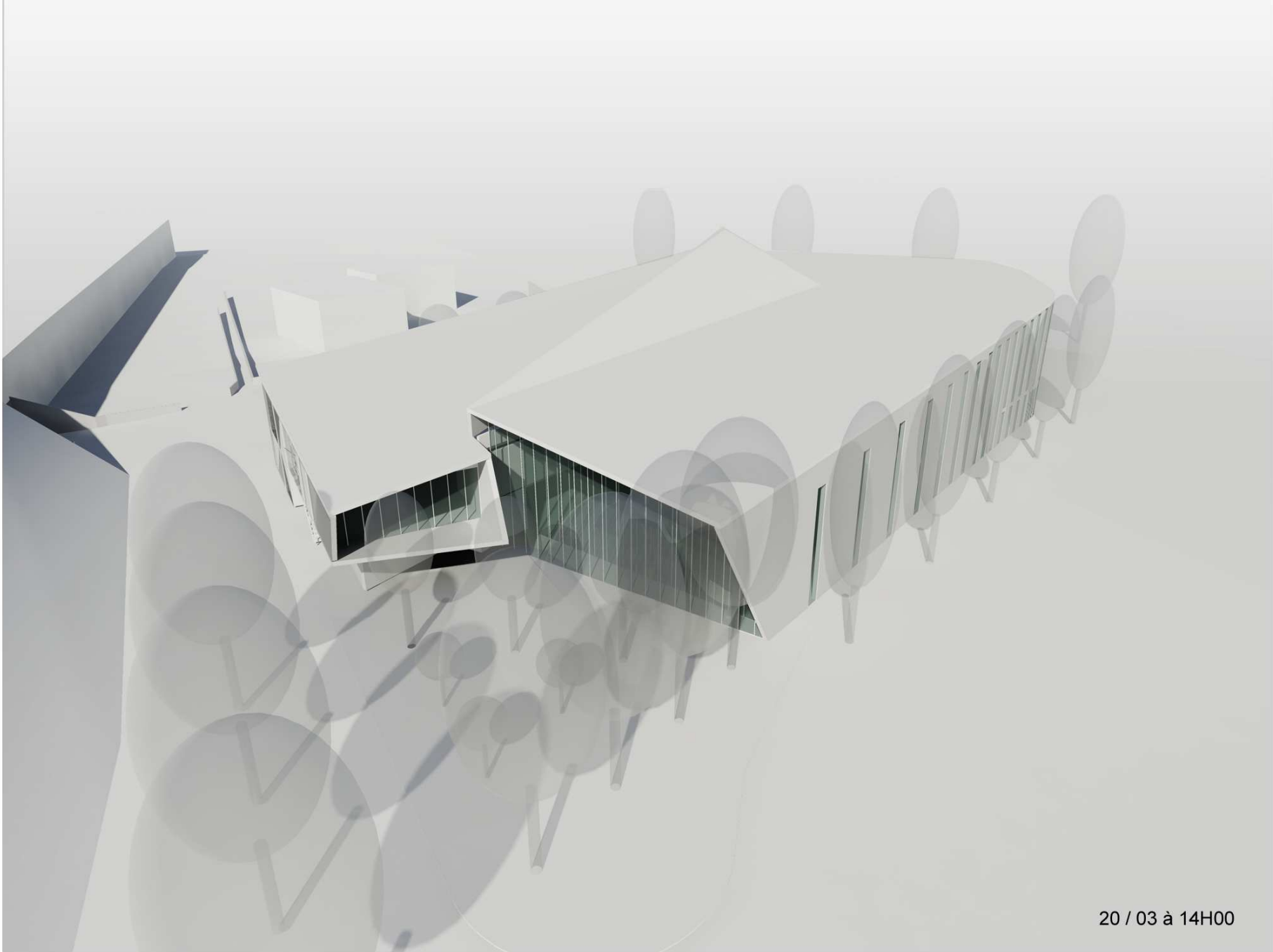
21 / 12 à 16H00



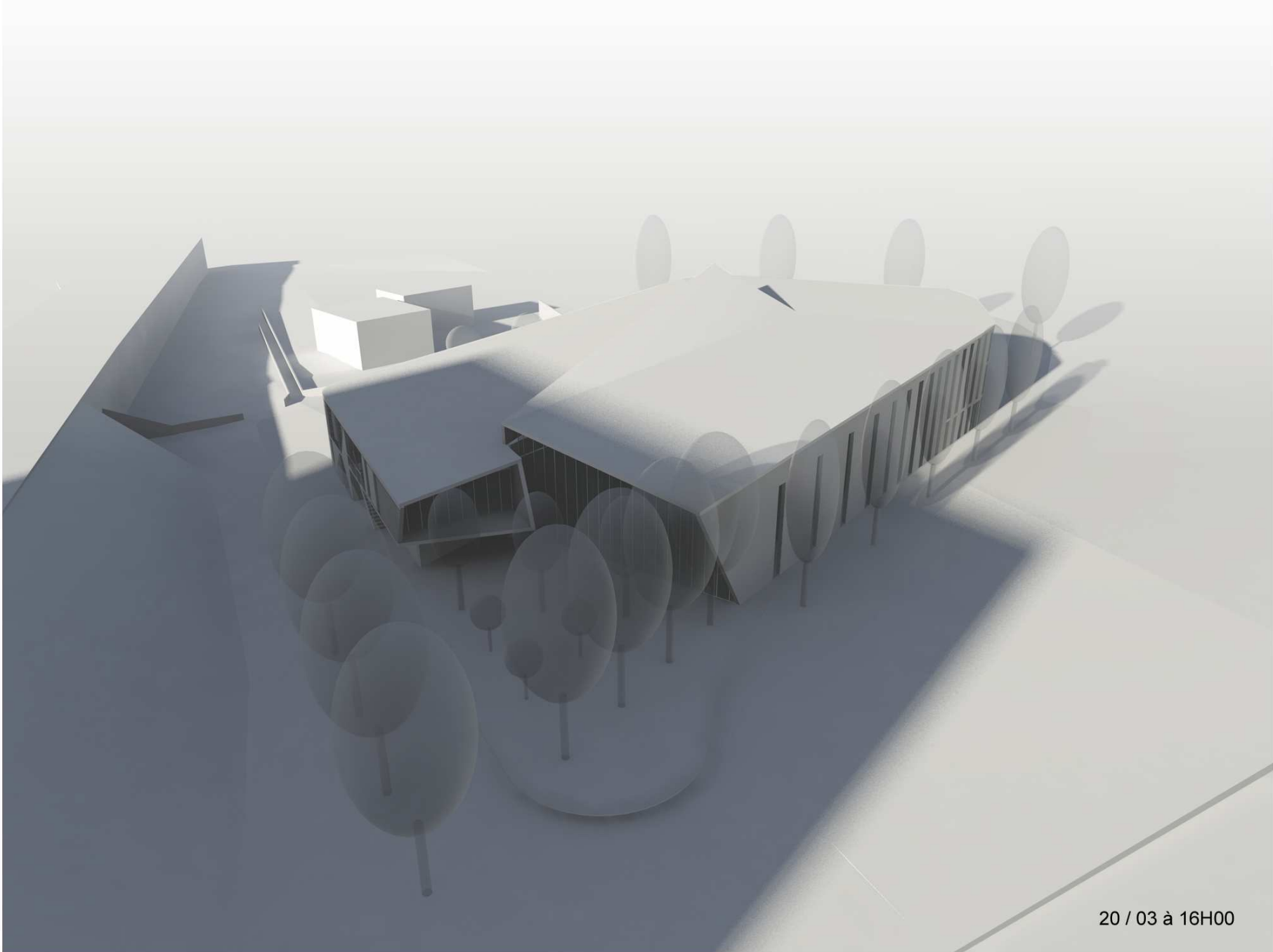
20 / 03 à 10H00



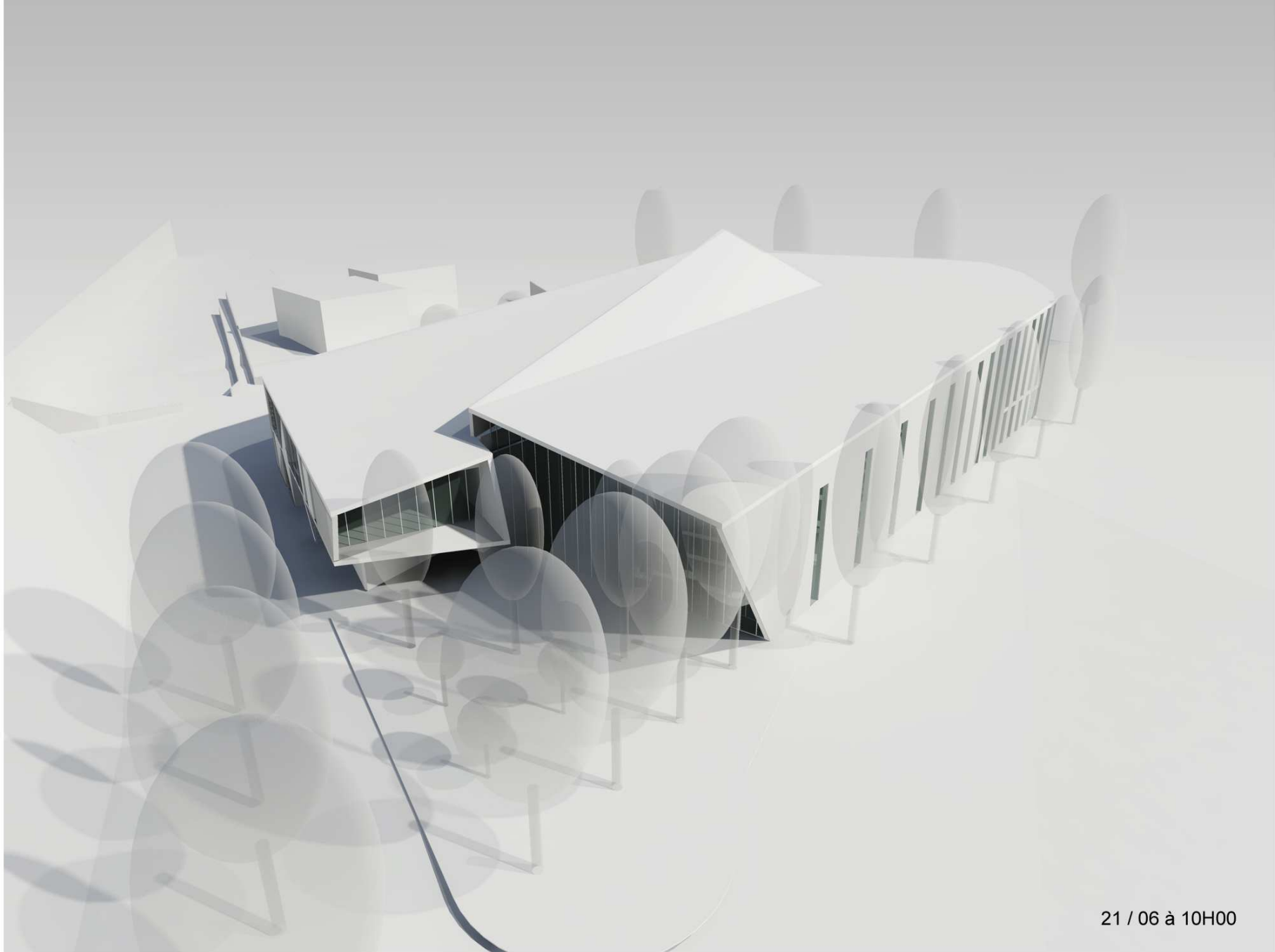
20 / 03 à 12H00



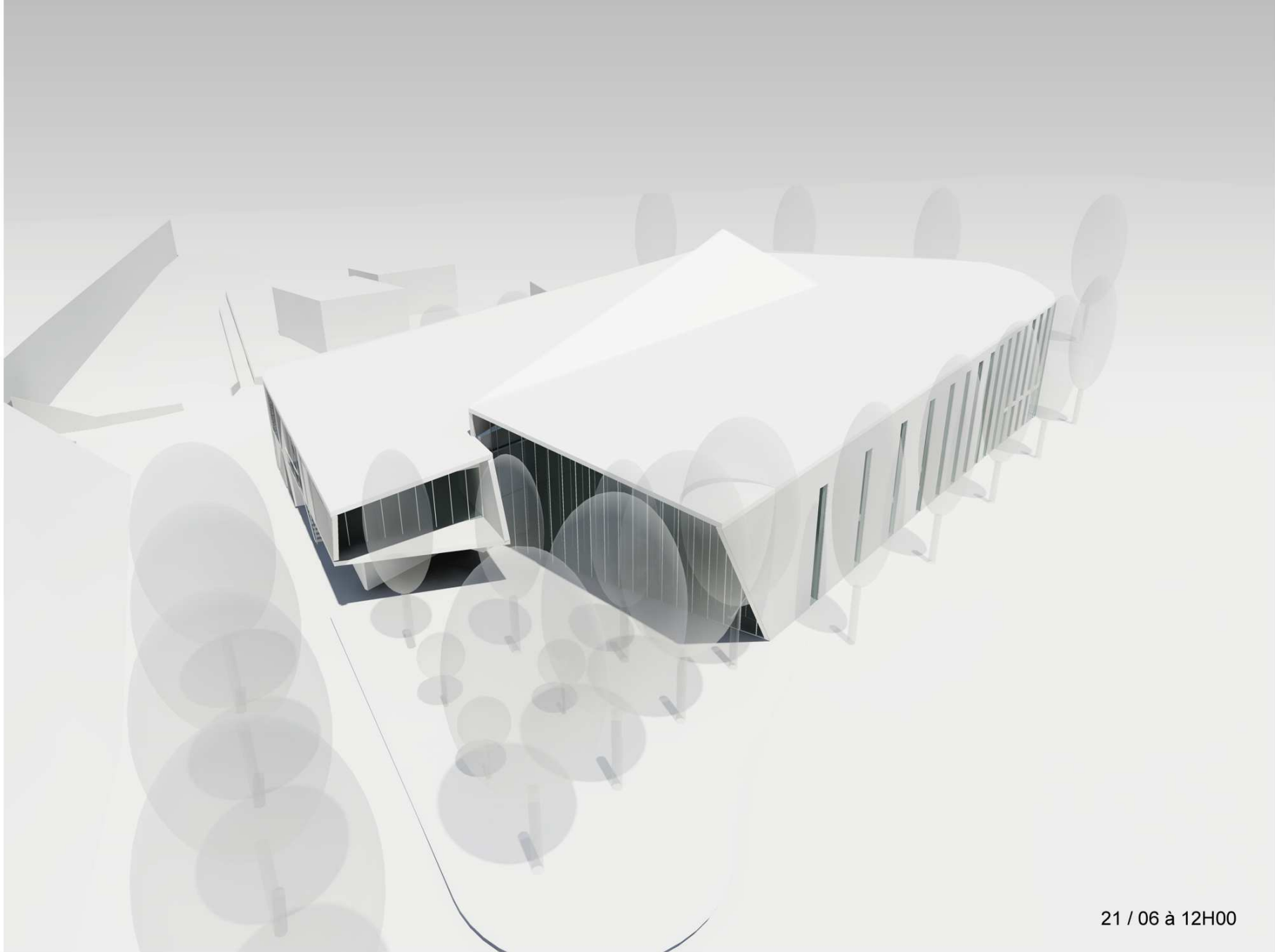
20 / 03 à 14H00



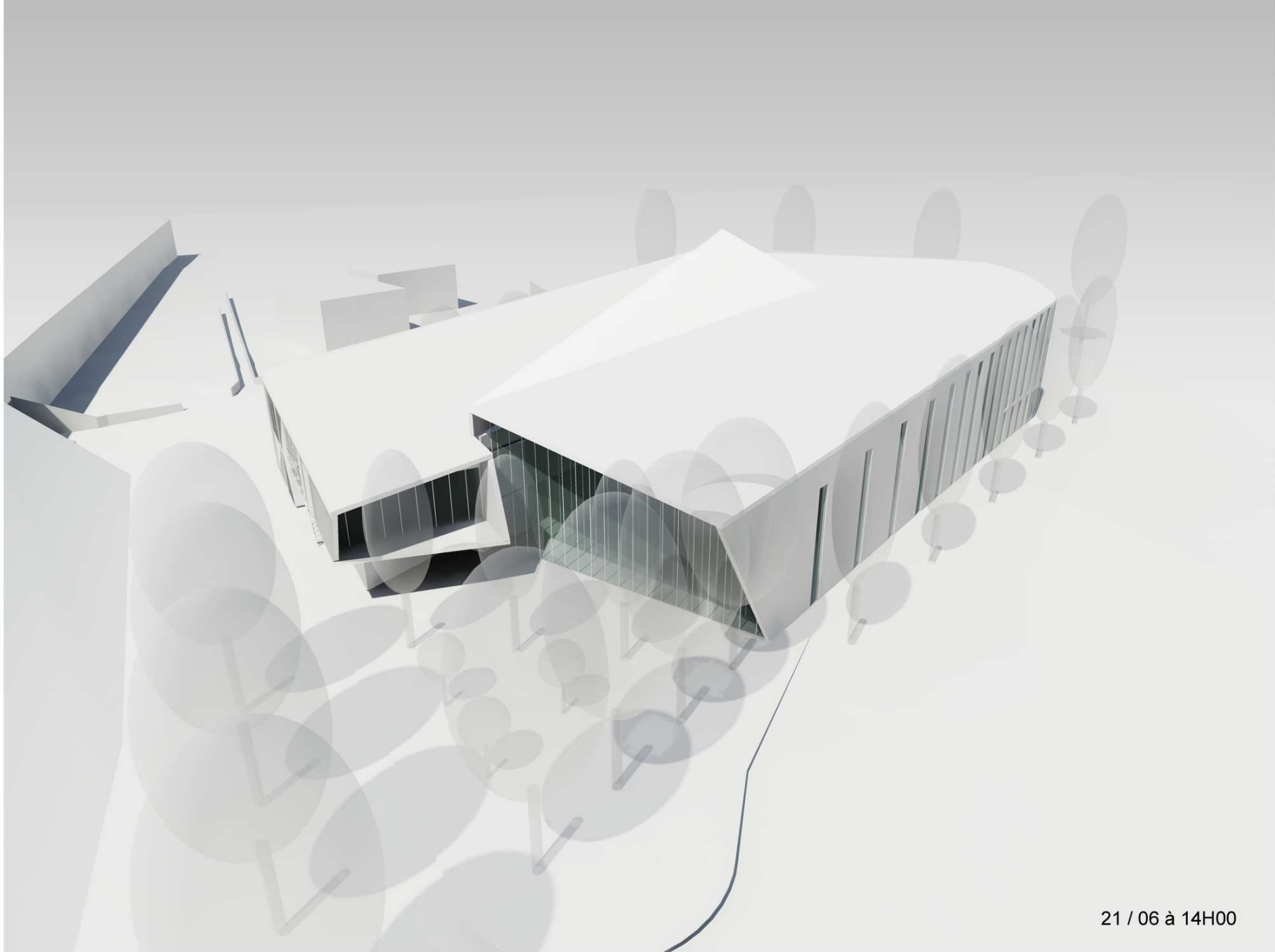
20 / 03 à 16H00



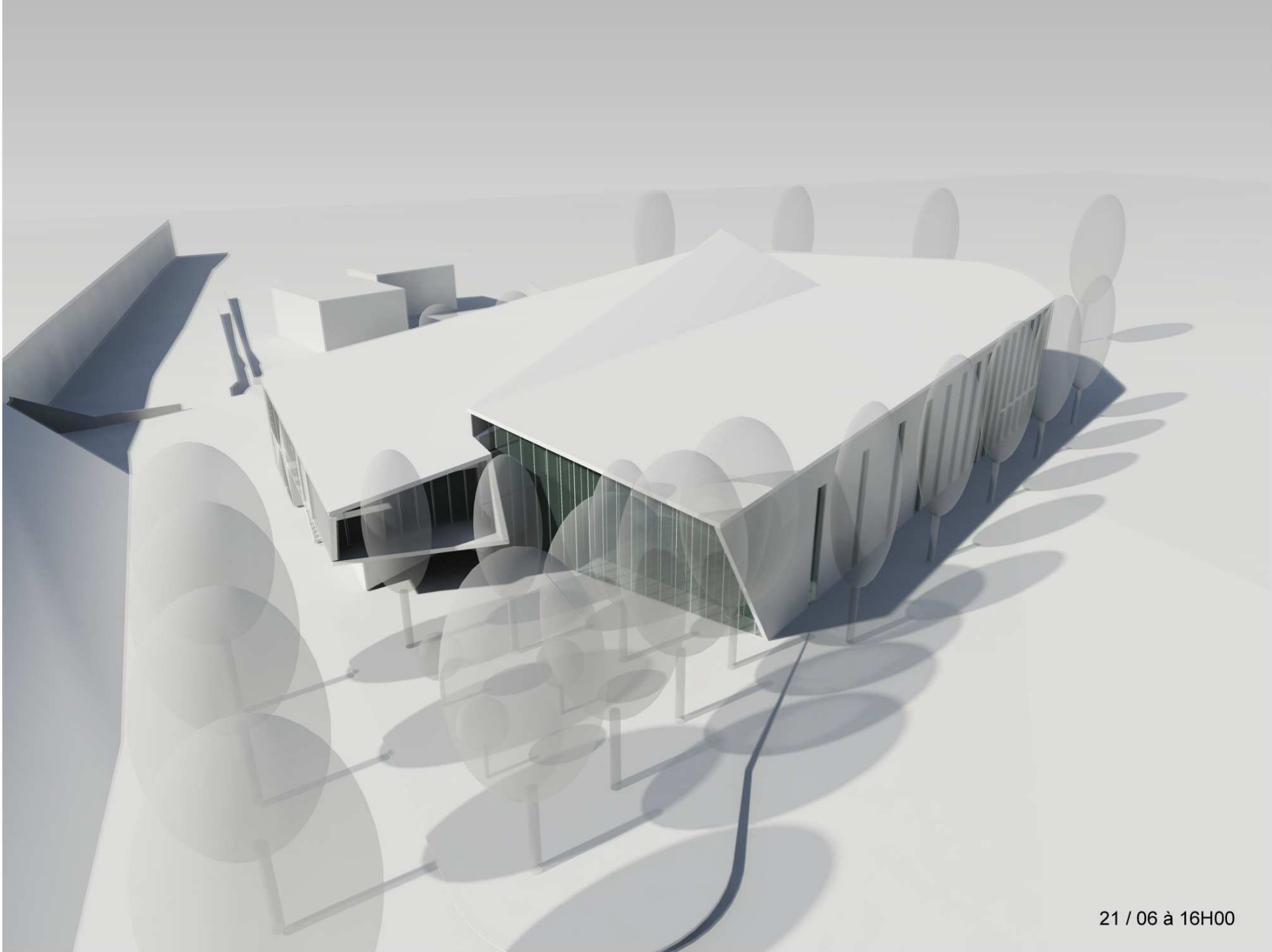
21 / 06 à 10H00



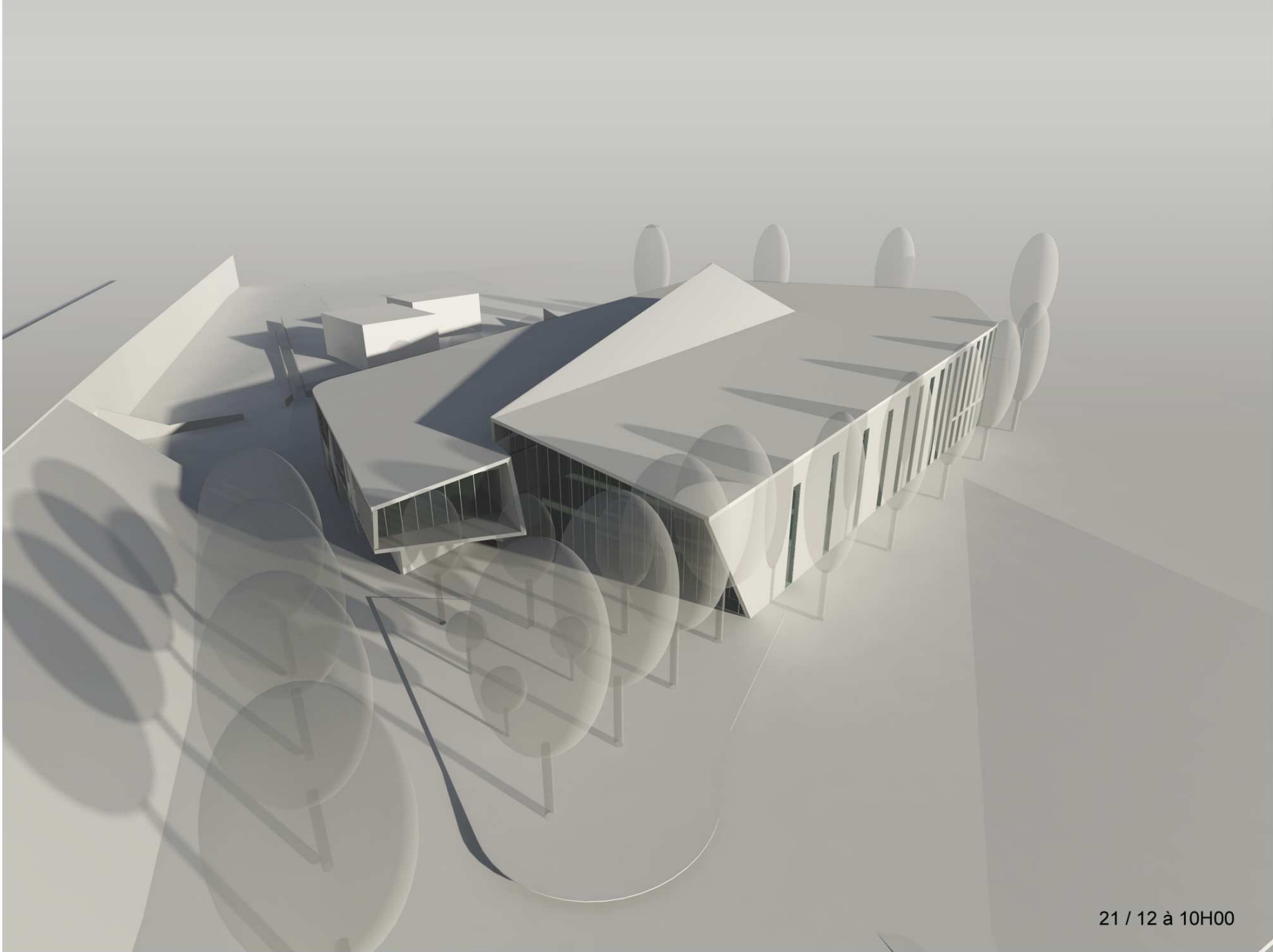
21 / 06 à 12H00



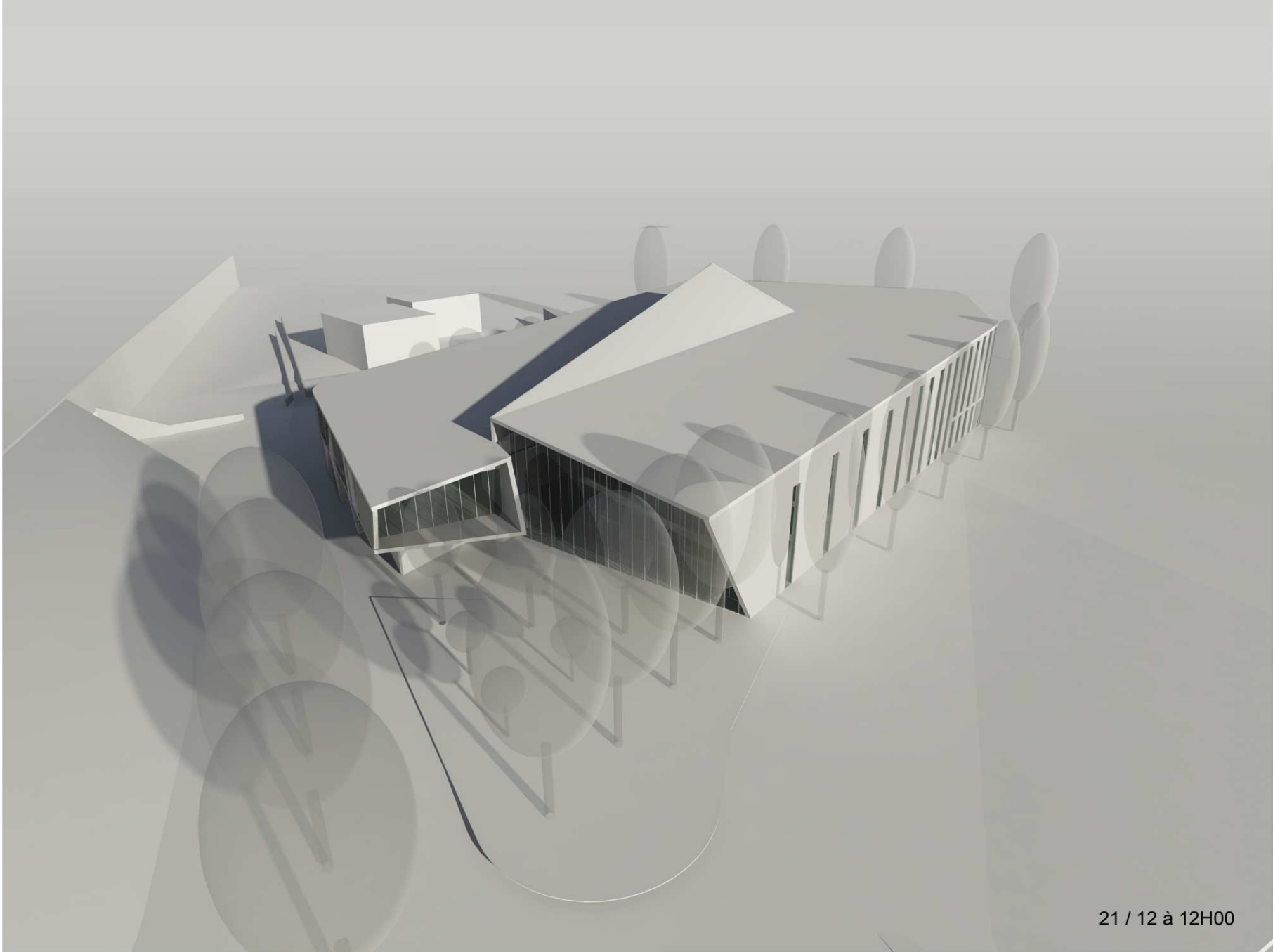
21 / 06 à 14H00



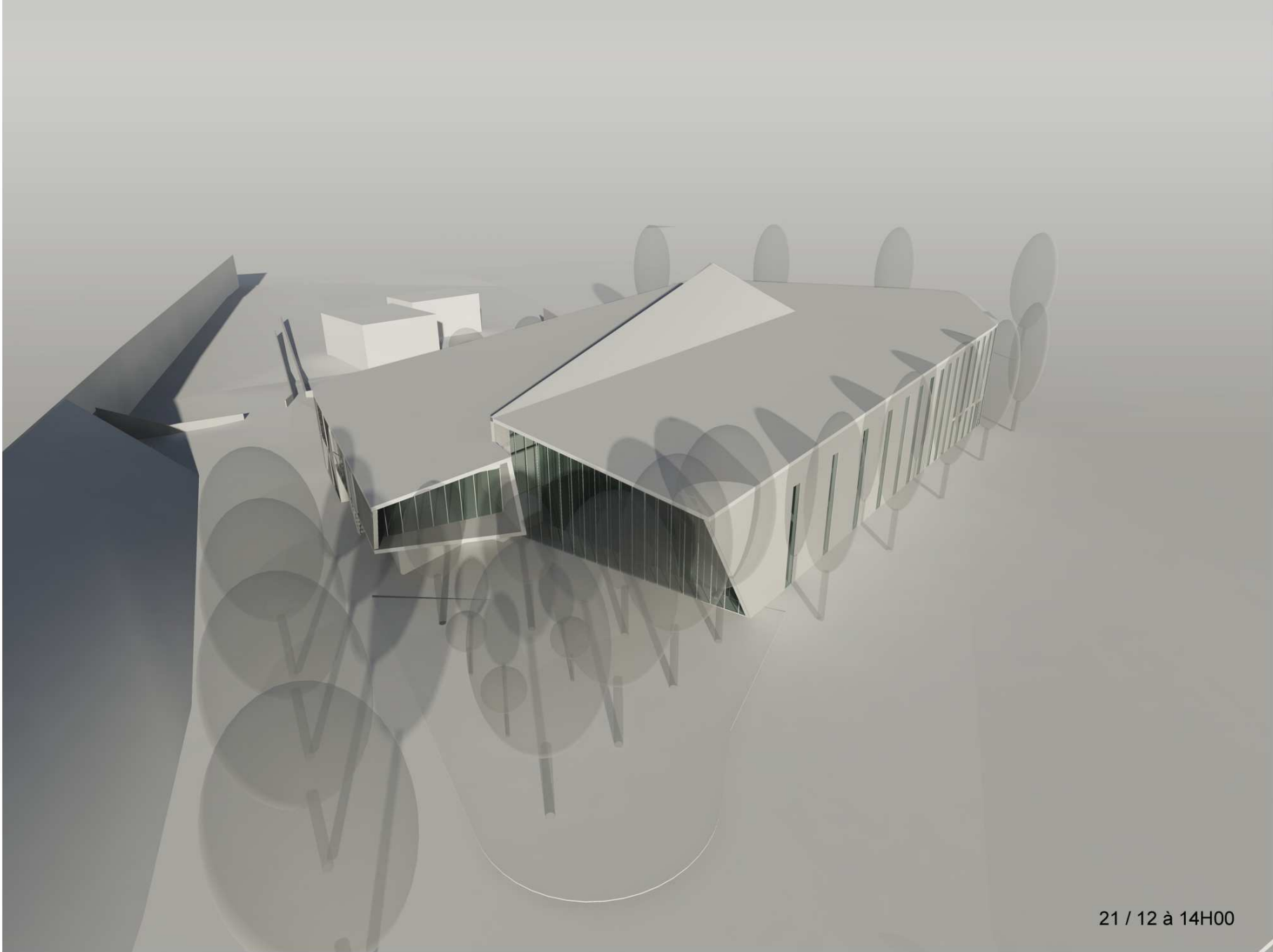
21 / 06 à 16H00



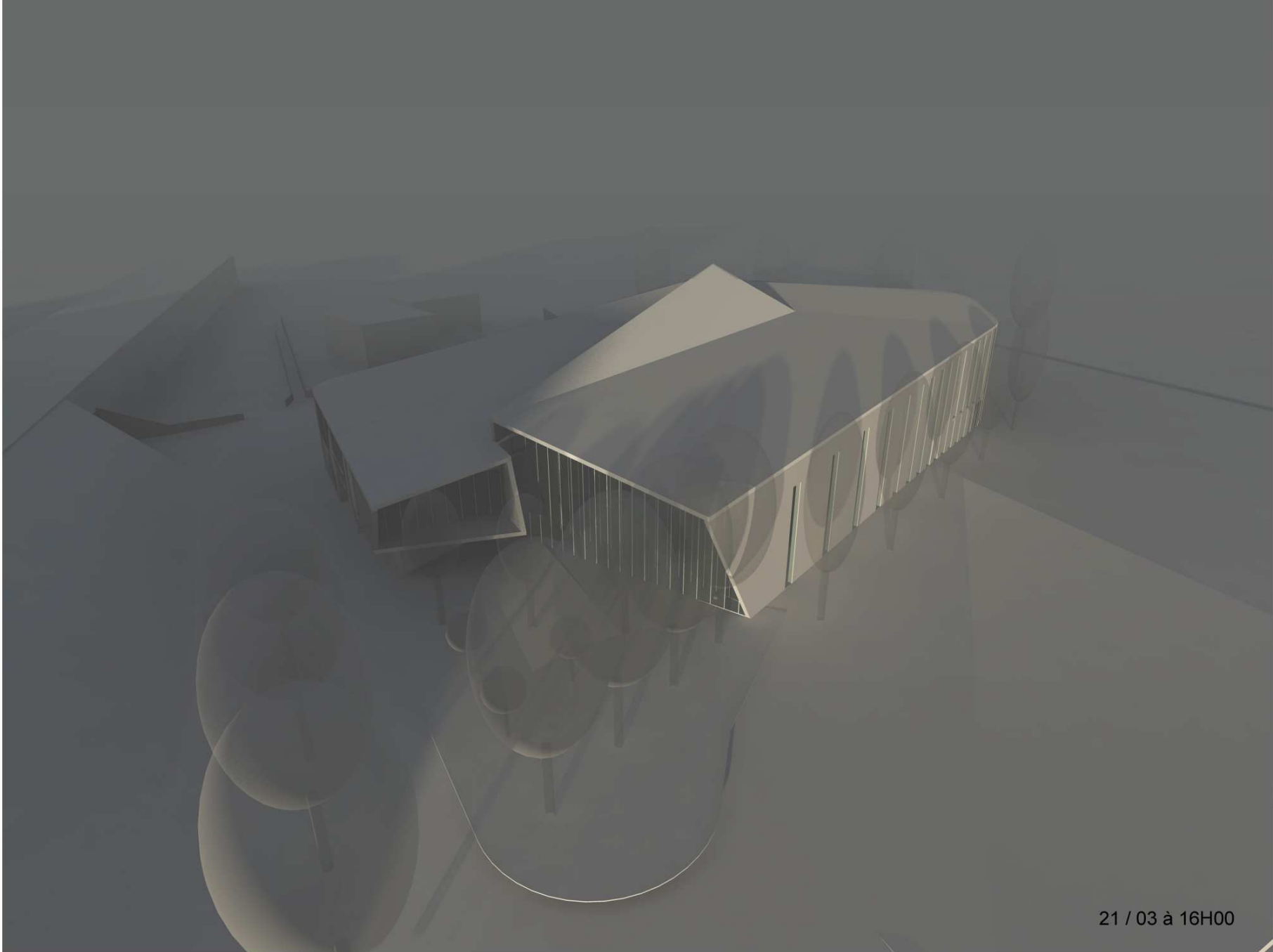
21 / 12 à 10H00



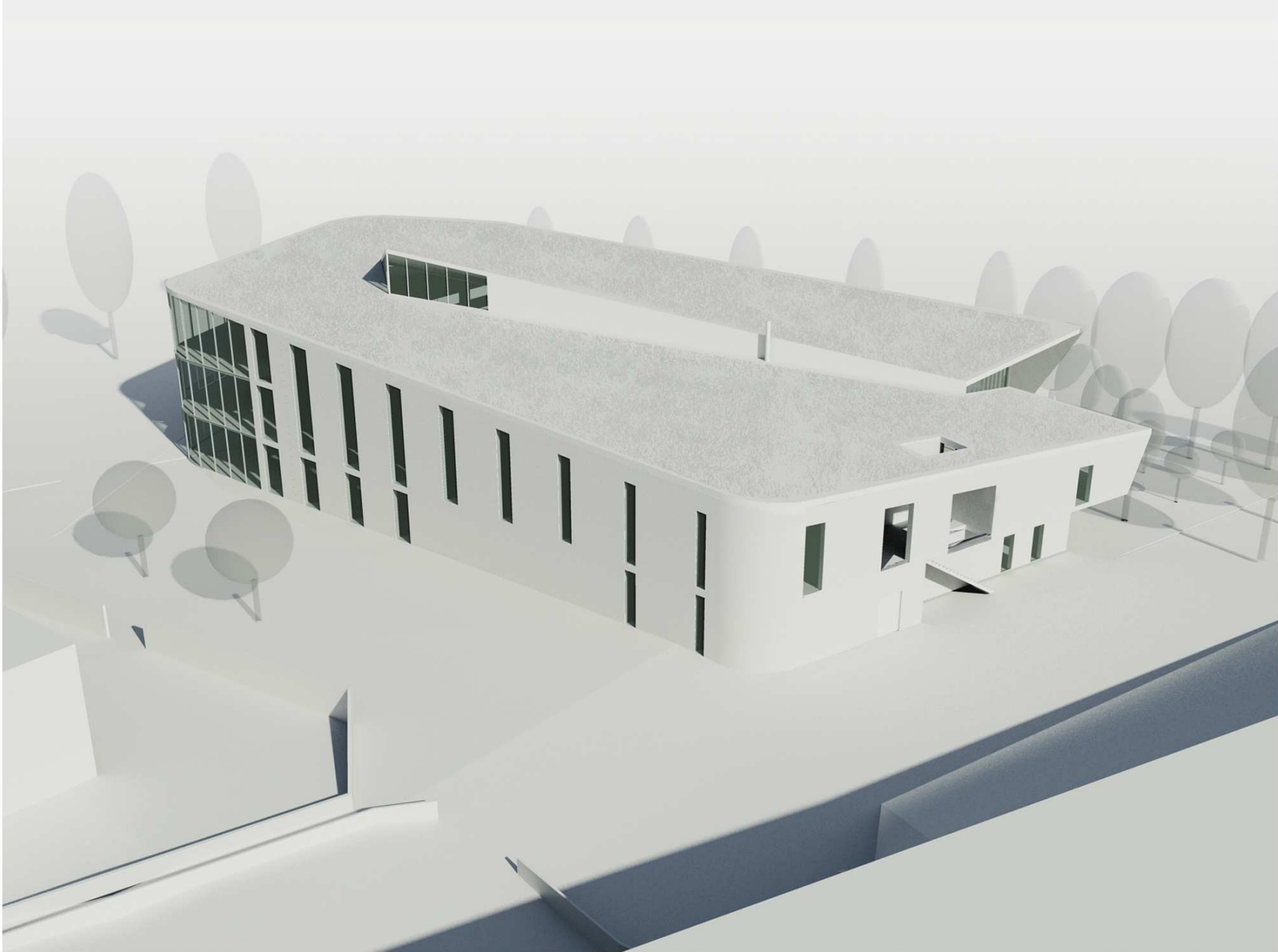
21 / 12 à 12H00



21 / 12 à 14H00



21 / 03 à 16H00



# PHASE I

Février 2012  
mars 2012

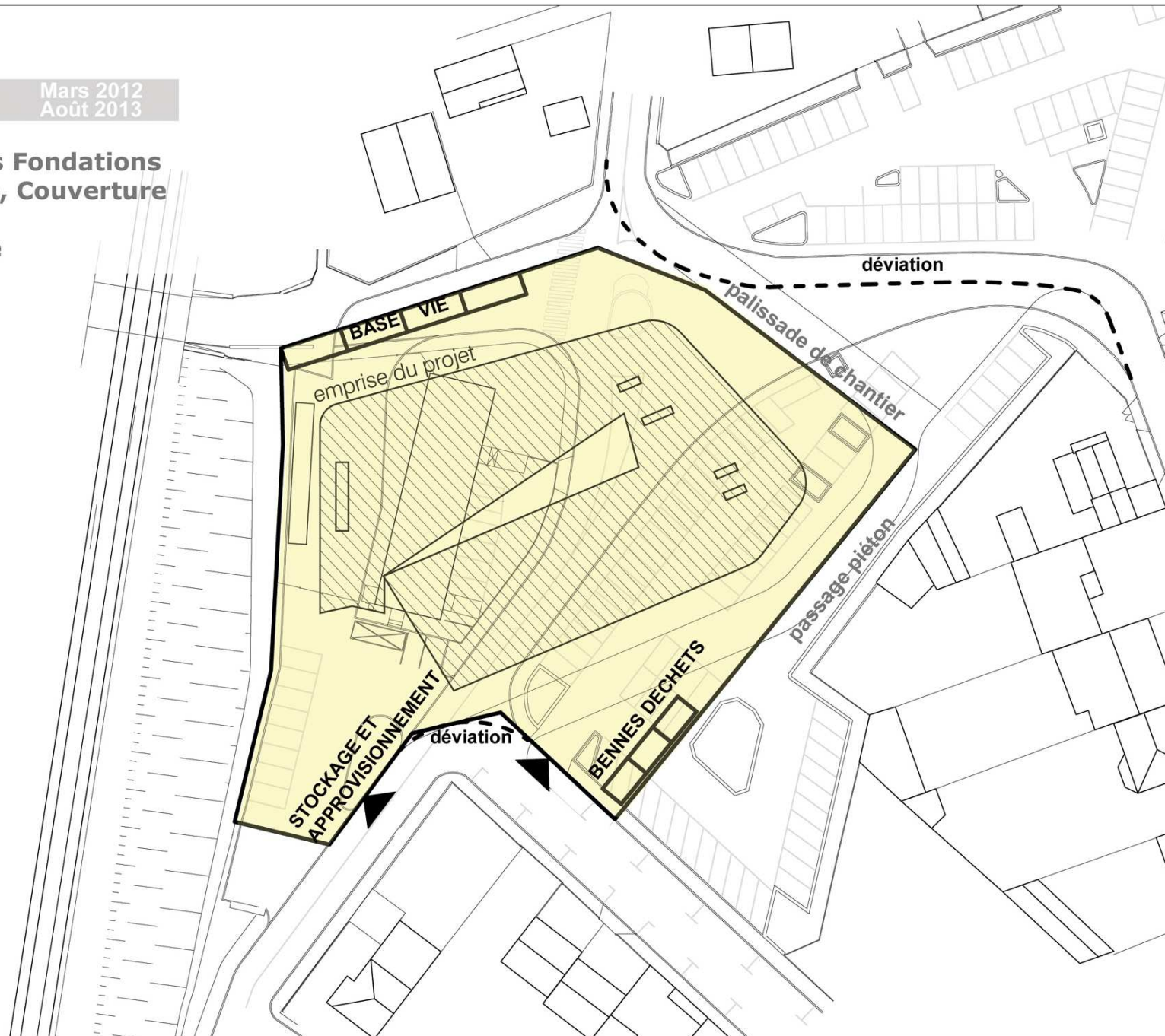
- ▶ Préparation
- ▶ Désamiantage
- ▶ Déconstruction



## PHASE II

Mars 2012  
Août 2013

- ▶ Terrassements Fondations
- ▶ GO, Charpente, Couverture
- ▶ Façades
- ▶ Second oeuvre



## PHASE III

Août 2013  
Octobre 2013

- ▶ Parachèvements et équipements intérieurs
- ▶ Aménagements extérieurs
- ▶ Parachèvement des espaces publics

